

Commissioners Court
May 14, 2010

Judge Blanchette, Commissioner Hughes and Commissioner Marshall canvassed the results of the Local Option Election in Precinct #2, held on May 8, 2010. Judge Blanchette announced that he had received a petition for a recount. A motion was made by **Commissioner Walston** to approve the canvassed results of the Local Option Election in Precinct #2. **Commissioner Hughes** seconded the motion. All voted yes and none no. SEE ATTACHED RECAPITULATION SHEET.

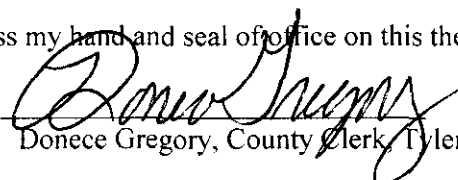
A motion was made by Commissioner Marshall and seconded by Commissioner Walston for the meeting to adjourn. All voted yes and none no.

THERE BEING NO FURTHER BUSINESS, THE MEETING ADJOURNED: 9:11 a.m.

I, Donece Gregory, County Clerk and ex officio member of the Tyler County Commissioners Court, do hereby certify to the fact that the above is a true and correct record of the Tyler County Commissioners Court session held on May 14, 2010.

Witness my hand and seal of office on this the 14th day of May, 2010.

Attest:


Donece Gregory, County Clerk, Tyler County, Texas

CERTIFICATE OF APPRECIATION

On behalf of the Citizens and Tax Payers of Tyler County, the Commissioners Court

GRATEFULLY ACKNOWLEDGES

Dawn Climer, Talina Copaus, Alexis Gilchrist, Ashley Greenbaum, Wade Hasson, Peyton Ricks, Tiffani Simank,
Ashleigh Stacey, Nicole Turner, Vann Walls, Shaunna Welch, David Williford and Michael Zhang

For the Beautification Project provided to the courthouse lawn directed by Ms. Reagan Pillack,
Ag Science, FFA Advisor for the Woodville High School Horticulture Class.

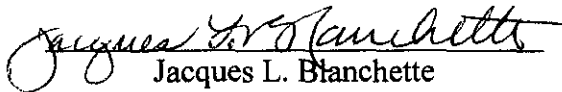
Presented this 14TH day of, **MAY 2010**

Martin Nash
Commissioner, Pct. 1

Rusty Hughes
Commissioner, Pct. 2

Mike Marshall
Commissioner, Pct. 3

Jack Walston
Commissioner, Pct. 4


Jacques L. Blanchette

County Judge

GENERAL FUND
ALL CHECKS

VENDOR NAME	ACCOUNT #	ACCOUNT NAME	ITEM/REASON	DATE	CHECK	AMOUNT
STURROCK, TERESA LANELL	2010 010-202-100	SALARIES PAYABLE	C#18995/STEVEN STURROCK	05/14/2010	096536	312.58
FICA	2010 010-202-100	SALARIES PAYABLE	FICA TAXES	05/14/2010	096537	6,317.63
FICA	2010 010-402-002	SOCIAL SECURITY	FICA TAXES	05/14/2010	096537	455.97
FICA	2010 010-405-002	SOCIAL SECURITY	FICA TAXES	05/14/2010	096537	52.89
FICA	2010 010-407-002	SOCIAL SECURITY	FICA TAXES	05/14/2010	096537	283.12
FICA	2010 010-409-002	SOCIAL SECURITY	FICA TAXES	05/14/2010	096537	60.42
FICA	2010 010-410-002	SOCIAL SECURITY	FICA TAXES	05/14/2010	096537	36.44
FICA	2010 010-411-002	SOCIAL SECURITY	FICA TAXES	05/14/2010	096537	220.33
FICA	2010 010-412-002	SOCIAL SECURITY	FICA TAXES	05/14/2010	096537	50.07
FICA	2010 010-413-002	SOCIAL SECURITY	FICA TAXES	05/14/2010	096537	42.22
FICA	2010 010-414-002	SOCIAL SECURITY	FICA TAXES	05/14/2010	096537	48.32
FICA	2010 010-415-002	SOCIAL SECURITY	FICA TAXES	05/14/2010	096537	19.72
FICA	2010 010-419-002	SOCIAL SECURITY	FICA TAXES	05/14/2010	096537	537.91
FICA	2010 010-420-002	SOCIAL SECURITY	FICA TAXES	05/14/2010	096537	386.44
FICA	2010 010-421-002	SOCIAL SECURITY	FICA TAXES	05/14/2010	096537	213.15
FICA	2010 010-422-002	SOCIAL SECURITY	FICA TAXES	05/14/2010	096537	223.22
FICA	2010 010-423-002	SOCIAL SECURITY	FICA TAXES	05/14/2010	096537	164.56
FICA	2010 010-424-002	SOCIAL SECURITY	FICA TAXES	05/14/2010	096537	48.21
FICA	2010 010-425-002	SOCIAL SECURITY	FICA TAXES	05/14/2010	096537	48.21
FICA	2010 010-426-002	SOCIAL SECURITY	FICA TAXES	05/14/2010	096537	2,682.61
FICA	2010 010-427-002	SOCIAL SECURITY	FICA TAXES	05/14/2010	096537	614.37
FICA	2010 010-428-002	SOCIAL SECURITY	FICA TAXES	05/14/2010	096537	50.07
FICA	2010 010-429-002	SOCIAL SECURITY	FICA TAXES	05/14/2010	096537	48.52
FICA	2010 010-430-002	SOCIAL SECURITY	FICA TAXES	05/14/2010	096537	62.74
FICA	2010 010-439-002	SOCIAL SECURITY	FICA TAXES	05/14/2010	096537	123.07
FICA	2010 010-442-002	SOCIAL SECURITY	FICA TAXES	05/14/2010	096537	238.33
FIT	2010 010-202-100	SALARIES PAYABLE	FIT TAXES	05/14/2010	096538	6,524.97
GALLASPY, CATINA KAY	2010 010-202-100	SALARIES PAYABLE	C#009638712/BRENT LOEDHEL	05/14/2010	096540	135.00
HENSARLING, ERICA NICOLE	2010 010-202-100	SALARIES PAYABLE	C#19794/ERIC HENSARLING	05/14/2010	096542	223.00
JAMES, ERICA LANE	2010 010-202-100	SALARIES PAYABLE	C#20134/ROY LYNN JAMES	05/14/2010	096543	143.00
JAMES, KATHRYN JANAY	2010 010-202-100	SALARIES PAYABLE	C#19235/ROY LYNN JAMES	05/14/2010	096544	200.00
MCALLEXANDER, MARY	2010 010-202-100	SALARIES PAYABLE	WITTMAN, THOMAS#10264403	05/14/2010	096545	125.00
MEDICARE - ELECTRONIC TRAN	2010 010-202-100	SALARIES PAYABLE	MEDICARE TAXES	05/14/2010	096546	1,477.49
MEDICARE - ELECTRONIC TRAN	2010 010-402-002	SOCIAL SECURITY	MEDICARE TAXES	05/14/2010	096546	106.64
MEDICARE - ELECTRONIC TRAN	2010 010-405-002	SOCIAL SECURITY	MEDICARE TAXES	05/14/2010	096546	12.37
MEDICARE - ELECTRONIC TRAN	2010 010-407-002	SOCIAL SECURITY	MEDICARE TAXES	05/14/2010	096546	66.21
MEDICARE - ELECTRONIC TRAN	2010 010-409-002	SOCIAL SECURITY	MEDICARE TAXES	05/14/2010	096546	14.13
MEDICARE - ELECTRONIC TRAN	2010 010-410-002	SOCIAL SECURITY	MEDICARE TAXES	05/14/2010	096546	2.53
MEDICARE - ELECTRONIC TRAN	2010 010-411-002	SOCIAL SECURITY	MEDICARE TAXES	05/14/2010	096546	51.53
MEDICARE - ELECTRONIC TRAN	2010 010-412-002	SOCIAL SECURITY	MEDICARE TAXES	05/14/2010	096546	11.71
MEDICARE - ELECTRONIC TRAN	2010 010-413-002	SOCIAL SECURITY	MEDICARE TAXES	05/14/2010	096546	11.35
MEDICARE - ELECTRONIC TRAN	2010 010-414-002	SOCIAL SECURITY	MEDICARE TAXES	05/14/2010	096546	11.35
MEDICARE - ELECTRONIC TRAN	2010 010-415-002	SOCIAL SECURITY	MEDICARE TAXES	05/14/2010	096546	4.21
MEDICARE - ELECTRONIC TRAN	2010 010-419-002	SOCIAL SECURITY	MEDICARE TAXES	05/14/2010	096546	122.30
MEDICARE - ELECTRONIC TRAN	2010 010-420-002	SOCIAL SECURITY	MEDICARE TAXES	05/14/2010	096546	30.38
MEDICARE - ELECTRONIC TRAN	2010 010-421-002	SOCIAL SECURITY	MEDICARE TAXES	05/14/2010	096546	49.26
MEDICARE - ELECTRONIC TRAN	2010 010-422-002	SOCIAL SECURITY	MEDICARE TAXES	05/14/2010	096546	53.21
MEDICARE - ELECTRONIC TRAN	2010 010-423-002	SOCIAL SECURITY	MEDICARE TAXES	05/14/2010	096546	38.42
MEDICARE - ELECTRONIC TRAN	2010 010-424-002	SOCIAL SECURITY	MEDICARE TAXES	05/14/2010	096546	11.27
MEDICARE - ELECTRONIC TRAN	2010 010-425-002	SOCIAL SECURITY	MEDICARE TAXES	05/14/2010	096546	11.27
MEDICARE - ELECTRONIC TRAN	2010 010-426-002	SOCIAL SECURITY	MEDICARE TAXES	05/14/2010	096546	533.22
MEDICARE - ELECTRONIC TRAN	2010 010-427-002	SOCIAL SECURITY	MEDICARE TAXES	05/14/2010	096546	143.22
MEDICARE - ELECTRONIC TRAN	2010 010-428-002	SOCIAL SECURITY	MEDICARE TAXES	05/14/2010	096546	11.71
MEDICARE - ELECTRONIC TRAN	2010 010-429-002	SOCIAL SECURITY	MEDICARE TAXES	05/14/2010	096546	11.35
MEDICARE - ELECTRONIC TRAN	2010 010-430-002	SOCIAL SECURITY	MEDICARE TAXES	05/14/2010	096546	14.27

GENERAL FUND
ALL CHECKS

VENDOR NAME	ACCOUNT #	ACCOUNT NAME	ITEM/REASON	DATE	CHECK	AMOUNT
MEDICARE - ELECTRONIC TRAN	2010 010-439-002	SOCIAL SECURITY	MEDICARE TAXES	05/14/2010	096546	28.78
MEDICARE - ELECTRONIC TRAN	2010 010-442-002	SOCIAL SECURITY	MEDICARE TAXES	05/14/2010	096546	55.74
NET SALARIES	2010 010-202-100	SALARIES PAYABLE	NET SALARIES	05/14/2010	096547	74,326.21
PAYNE, JANA R.	2010 010-202-100	SALARIES PAYABLE	C#10019876/JOSEPH HENNIGAN	05/14/2010	096548	333.20
PHILLIPS, JENNIFER	2010 010-202-100	SALARIES PAYABLE	C#9018399/MATTHEW PHILLIPS	05/14/2010	096549	200.00
POWELL, MARK ANTHONY	2010 010-202-100	SALARIES PAYABLE	C#15,187 VICKIE KNIGHT	05/14/2010	096550	82.50
UNITED STATES TREASURY-IRS	2010 010-202-100	SALARIES PAYABLE	IRS LEVY-BROOM,PAMELA	05/14/2010	096552	60.00
WHITWORTH, MELISSA M.	2010 010-202-100	SALARIES PAYABLE	C#001157553/CASEY R WHITWORTH	05/14/2010	096553	350.00
AVAYA, INC.	2010 010-420-009	TELEPHONE	0101948445/TAX	05/14/2010	096693	60.00
MUSIC MOUNTAIN WATER CO	2010 010-422-007	OFFICE SUPPLIES	78998800/ODAUD	05/14/2010	096694	19.14
MUSIC MOUNTAIN WATER CO	2010 010-419-007	OFFICE SUPPLIES	21654100/ODDA	05/14/2010	096695	43.15
VERIZON WIRELESS	2010 010-421-009	TELEPHONE	8019-00001/COJUD	05/14/2010	096697	131.13
VERIZON WIRELESS	2010 010-426-009	TELEPHONE	6355-00001/TCSD	05/14/2010	096698	1,249.76
A & M WIRELESS	2010 010-426-009	TELEPHONE	041227/TCSD	05/14/2010	096699	10.00
A & M WIRELESS	2010 010-426-009	TELEPHONE	041502/TCSD	05/14/2010	096699	12.95
A & M WIRELESS	2010 010-426-009	TELEPHONE	041504/TCSD	05/14/2010	096699	19.99
A & M WIRELESS	2010 010-426-009	TELEPHONE	041556/TCSD	05/14/2010	096699	76.80
A T & T	2010 010-401-009	PROBATION TELEPHONE	36524545/APRIL 2010	05/14/2010	096700	190.15
A T & T	2010 010-402-009	TELEPHONE	36524545/APRIL 2010	05/14/2010	096700	158.70
A T & T	2010 010-403-009	TELEPHONE	36524545/APRIL 2010	05/14/2010	096700	140.21
A T & T	2010 010-407-009	TELEPHONE	36524545/APRIL 2010	05/14/2010	096700	63.48
A T & T	2010 010-409-009	TELEPHONE	36524545/APRIL 2010	05/14/2010	096700	31.74
A T & T	2010 010-411-009	TELEPHONE	36524545/APRIL 2010	05/14/2010	096700	75.22
A T & T	2010 010-419-009	TELEPHONE	36524545/APRIL 2010	05/14/2010	096700	228.15
A T & T	2010 010-420-009	TELEPHONE	36524545/APRIL 2010	05/14/2010	096700	286.38
A T & T	2010 010-421-009	TELEPHONE	36524545/APRIL 2010	05/14/2010	096700	95.22
A T & T	2010 010-422-009	TELEPHONE	36524545/APRIL 2010	05/14/2010	096700	65.47
A T & T	2010 010-423-009	TELEPHONE	36524545/APRIL 2010	05/14/2010	096700	31.74
A T & T	2010 010-426-009	TELEPHONE	36524545/APRIL 2010	05/14/2010	096700	494.01
A T & T	2010 010-430-009	TELEPHONE - HIGHWAY PATROL	36524545/APRIL 2010	05/14/2010	096700	97.21
A T & T	2010 010-430-011	TELEPHONE - DRIVERS LICENS	36524545/APRIL 2010	05/14/2010	096700	63.48
A T & T	2010 010-430-010	TELEPHONE - PARKS & WILDLI	36524545/APRIL 2010	05/14/2010	096700	150.46
A T & T	2010 010-440-015	SERVICE CONTRACTS	36524545/APRIL 2010	05/14/2010	096700	239.23
A T & T	2010 010-429-009	TELEPHONE	36524545/APRIL 2010	05/14/2010	096700	88.47
A T & T	2010 010-442-012	ELEVATOR REPAIRS	36524545/APRIL 2010	05/14/2010	096700	21.74
A T & T LONG DISTANCE	2010 010-401-009	PROBATION TELEPHONE	250086/LD	05/14/2010	096701	3.33
A T & T LONG DISTANCE	2010 010-402-009	TELEPHONE	250086/LD	05/14/2010	096701	9.20
A T & T LONG DISTANCE	2010 010-403-009	TELEPHONE	250086/LD	05/14/2010	096701	7.73
A T & T LONG DISTANCE	2010 010-407-009	TELEPHONE	250086/LD	05/14/2010	096701	2.82
A T & T LONG DISTANCE	2010 010-411-009	TELEPHONE	250086/LD	05/14/2010	096701	7.45
A T & T LONG DISTANCE	2010 010-419-009	TELEPHONE	250086/LD	05/14/2010	096701	15.14
A T & T LONG DISTANCE	2010 010-420-009	TELEPHONE	250086/LD	05/14/2010	096701	24.33
A T & T LONG DISTANCE	2010 010-421-009	TELEPHONE	250086/LD	05/14/2010	096701	9.46
A T & T LONG DISTANCE	2010 010-422-009	TELEPHONE	250086/LD	05/14/2010	096701	2.19
A T & T LONG DISTANCE	2010 010-423-009	TELEPHONE	250086/LD	05/14/2010	096701	2.42
A T & T LONG DISTANCE	2010 010-426-009	TELEPHONE	250086/LD	05/14/2010	096701	89.83
A T & T LONG DISTANCE	2010 010-430-009	TELEPHONE - HIGHWAY PATROL	250086/LD	05/14/2010	096701	5.08
A T & T LONG DISTANCE	2010 010-430-011	TELEPHONE - DRIVERS LICENS	250086/LD	05/14/2010	096701	15.33
A T & T LONG DISTANCE	2010 010-430-010	TELEPHONE - PARKS & WILDLI	250086/LD	05/14/2010	096701	1.54
A T & T LONG DISTANCE	2010 010-440-015	SERVICE CONTRACTS	250086/LD	05/14/2010	096701	1.66
A T & T LONG DISTANCE	2010 010-439-009	TELEPHONE	250086/LD	05/14/2010	096701	17.83
ACE IMAGEWEAR	2010 010-442-008	UNIFORMS	3719/COJUD	05/14/2010	096703	31.71
ACE IMAGEWEAR	2010 010-442-008	UNIFORMS	3719/COJUD	05/14/2010	096703	66.58
ACE IMAGEWEAR	2010 010-442-008	UNIFORMS	3719/COJUD	05/14/2010	096703	45.66
ACE IMAGEWEAR	2010 010-442-008	UNIFORMS	3719/COJUD	05/14/2010	096703	53.93

GENERAL FUND
ALL CHECKS

VENDOR NAME	ACCOUNT #	ACCOUNT NAME	ITEM/REASON	DATE	CHECK	AMOUNT
ALLEN, TERRY	2010 010-401-021	DETCOS TRAVEL	DETCOS/MILEAGE	05/14/2010	096704	52.00
BETHANY BAPTIST CHURCH	2010 010-401-050	ELECTION EXPENSE	LOCAL OPTION ELECTION	05/14/2010	096710	25.00
BJ TRANSPORT SERVICE INC	2010 010-401-043	AUTOPSIES	MCINNIS, MICHELLE RENEE	05/14/2010	096712	3,000.00
BRANCH, HERBERT	2010 010-401-050	ELECTION EXPENSE	LOCAL OPTION ELECTION	05/14/2010	096713	30.00
BRANCH, KATHERINE	2010 010-401-050	ELECTION EXPENSE	LOCAL OPTION ELECTION	05/14/2010	096714	112.00
BROOKSHIRE BROS. CORPORATE	2010 010-427-036	PRISONER MEALS	18005/JAIL	05/14/2010	096715	55.44
BROOKSHIRE BROS. CORPORATE	2010 010-427-036	PRISONER MEALS	18005/JAIL	05/14/2010	096715	41.78
BROOKSHIRE BROS. CORPORATE	2010 010-427-036	PRISONER MEALS	18005/JAIL	05/14/2010	096715	50.04
BROOKSHIRE BROS. CORPORATE	2010 010-427-036	PRISONER MEALS	18005/JAIL	05/14/2010	096715	41.78
BROOKSHIRE BROS. CORPORATE	2010 010-427-036	PRISONER MEALS	18005/JAIL	05/14/2010	096715	3.52
BROOKSHIRE BROS. CORPORATE	2010 010-427-036	PRISONER MEALS	18005/JAIL	05/14/2010	096715	34.82
BROOKSHIRE BROS. CORPORATE	2010 010-427-036	PRISONER MEALS	18005/JAIL	05/14/2010	096715	54.77
BROOKSHIRE BROS. CORPORATE	2010 010-427-036	PRISONER MEALS	18005/JAIL	05/14/2010	096715	41.78
BURRELL, KATELYN	2010 010-401-050	ELECTION EXPENSE	LOCAL OPTION ELECTION	05/14/2010	096718	52.00
CAP SHOP, THE	2010 010-414-007	OFFICE SUPPLIES	SHIRT LOGOS/JP4	05/14/2010	096720	21.00
CIT TECHNOLOGY FIN SERV, I	2010 010-440-018	EQUIPMENT LEASE	930-0039478-000/EXT	05/14/2010	096722	85.30
CIT TECHNOLOGY FIN SERV, I	2010 010-440-018	EQUIPMENT LEASE	930-0039477-000/JF1	05/14/2010	096722	85.30
CMA COMMUNICATIONS CABLEVI	2010 010-427-010	JAIL SUPPLIES	163030408/TCSD	05/14/2010	096724	75.35
COOLEY, JIMMIE	2010 010-401-050	ELECTION EXPENSE	LOCAL OPTION ELECTION	05/14/2010	096726	104.00
COXE, RAY PHD	2010 010-408-099	PSYCHIATRIC & MEDICAL EXFE	WINDOM ELLIOTT	05/14/2010	096728	300.00
DEPARTMENT OF STATE HEALTH	2010 010-402-009	TELEPHONE	C7000008/COCLK	05/14/2010	096732	104.31
DISCOUNT PEST CONTROL	2010 010-442-013	REPAIRS AT JUSTICE CENTER	280.00 LABOR/TCSD	05/14/2010	096734	280.00
ELECTION SYSTEMS & SOFTWAR	2010 010-401-050	ELECTION EXPENSE	T94179/COCLK	05/14/2010	096738	1,377.32
ELECTION SYSTEMS & SOFTWAR	2010 010-401-050	ELECTION EXPENSE	T94179/COCLK	05/14/2010	096738	60.00
ELECTION SYSTEMS & SOFTWAR	2010 010-401-050	ELECTION EXPENSE	T94179/COCLK	05/14/2010	096738	60.25
ELECTION SYSTEMS & SOFTWAR	2010 010-401-050	ELECTION EXPENSE	T94179/COCLK	05/14/2010	096738	698.31
ENTERGY	2010 010-442-032	UTILITIES-BEST BUILDING	3458292/BEST BLDG.	05/14/2010	096740	397.23
ENTERGY	2010 010-442-032	UTILITIES-JUSTICE CENTER	1727262/JUSTICE CTR.	05/14/2010	096740	69.62
EXCEL CAR WASH, INC.	2010 010-426-029	GAS, OIL, GREASE	34.95 LABOR/TCSD	05/14/2010	096741	40.75
EXCEL CAR WASH, INC.	2010 010-426-029	GAS, OIL, GREASE	34.95 LABOR/TCSD	05/14/2010	096741	40.75
EXCEL CAR WASH, INC.	2010 010-426-029	GAS, OIL, GREASE	34.95 LABOR/TCSD	05/14/2010	096741	50.75
FEDEX	2010 010-426-007	OFFICE SUPPLIES	1706-0613-2/TCSD	05/14/2010	096742	35.31
FONTENOT, CARL	2010 010-402-007	OFFICE SUPPLIES	AC ADAPTER/COCLK	05/14/2010	096743	35.00
FF MAILING SOLUTIONS	2010 010-440-018	EQUIPMENT LEASE	500065071/TAX	05/14/2010	096744	7.75
HARDIN COUNTY JAIL	2010 010-401-035	HOUSING OF TCSD INMATES	APRIL 2010/TCSD	05/14/2010	096749	2,720.00
HARDIN COUNTY SHERIFF'S OF	2010 010-427-043	PRISONER MEDICAL	HUTTO, EARNEST/TCSD	05/14/2010	096750	45.00
HERITAGE VILLAGE MUSEUM	2010 010-426-024	TRAVEL & EDUCATION	WEST. WKEND/TCSD	05/14/2010	096752	251.50
HOLMES, SARAH N.	2010 010-401-050	ELECTION EXPENSE	LOCAL OPTION ELECTION	05/14/2010	096754	104.00
INDOFF OFFICE SUPPLIES	2010 010-440-007	SUPPLIES	183749/TREAS	05/14/2010	096757	14.89
INDOFF OFFICE SUPPLIES	2010 010-423-007	OFFICE SUPPLIES	183749/TREAS	05/14/2010	096757	11.88
INDOFF OFFICE SUPPLIES	2010 010-405-007	OFFICE SUPPLIES	186597/VET	05/14/2010	096757	56.43
INDOFF OFFICE SUPPLIES	2010 010-407-007	OFFICE SUPPLIES	187474/DSCLK	05/14/2010	096757	4.75
INDOFF OFFICE SUPPLIES	2010 010-440-007	SUPPLIES	185596/CDA	05/14/2010	096757	43.99
INDOFF OFFICE SUPPLIES	2010 010-419-007	OFFICE SUPPLIES	185596/CDA	05/14/2010	096757	53.66
INDOFF OFFICE SUPPLIES	2010 010-419-007	OFFICE SUPPLIES	185596/CDA	05/14/2010	096757	661.45
INDOFF OFFICE SUPPLIES	2010 010-440-007	SUPPLIES	183748/COJUD	05/14/2010	096757	77.97
INDOFF OFFICE SUPPLIES	2010 010-421-007	OFFICE SUPPLIES	183748/COJUD	05/14/2010	096757	39.12
INDOFF OFFICE SUPPLIES	2010 010-442-010	REPAIRS TO COURTHOUSE	183748/COJUD	05/14/2010	096757	203.95
INNOVATIVE LEASING	2010 010-440-018	EQUIPMENT LEASE	001-0034127-001/TAX	05/14/2010	096758	133.41
INNOVATIVE OFFICE SYSTEMS	2010 010-419-007	OFFICE SUPPLIES	TYLCOUDA/CDA	05/14/2010	096759	5.84
INVENTORY TRADING COMPANY	2010 010-426-041	UNIFORMS	181713/TCSD	05/14/2010	096761	195.22
INVENTORY TRADING COMPANY	2010 010-426-041	UNIFORMS	181439/TCSD	05/14/2010	096761	343.00
JARROTT'S PHARMACY	2010 010-427-043	PRISONER MEDICAL	CHRISTOPHER, ALVIN	05/14/2010	096764	25.70
JARROTT'S PHARMACY	2010 010-427-043	PRISONER MEDICAL	COFES, CHARLES	05/14/2010	096764	110.66
JARROTT'S PHARMACY	2010 010-427-043	PRISONER MEDICAL	GEORGE, DANA	05/14/2010	096764	33.15

GENERAL FUND
ALL CHECKS

VENDOR NAME	ACCOUNT #	ACCOUNT NAME	ITEM/REASON	DATE	CHECK	AMOUNT
JARROTT'S PHARMACY	2010 010-427-043	PRISONER MEDICAL	EAVES, CHRIS	05/14/2010	096764	74.71
JARROTT'S PHARMACY	2010 010-427-043	PRISONER MEDICAL	FOXNORTH, JACOB	05/14/2010	096764	27.16
JARROTT'S PHARMACY	2010 010-427-043	PRISONER MEDICAL	FREEMAN, WHITNEY	05/14/2010	096764	18.18
JARROTT'S PHARMACY	2010 010-427-043	PRISONER MEDICAL	LEWIS, DALLAS BRD	05/14/2010	096764	28.56
JARROTT'S PHARMACY	2010 010-427-043	PRISONER MEDICAL	STEWART, RUTH	05/14/2010	096764	27.60
JARROTT'S PHARMACY	2010 010-427-043	PRISONER MEDICAL	DEPT. TY. CTY. SHERIFF	05/14/2010	096764	8.37
JARROTT'S PHARMACY	2010 010-427-043	PRISONER MEDICAL	STITTEN, JOHN	05/14/2010	096764	23.35
JARROTT'S PHARMACY	2010 010-427-043	PRISONER MEDICAL	WARD, GERALD	05/14/2010	096764	21.06
KAPLAN, BRENDA CSR	2010 010-415-024	COURT REPORTER	TRANSCRIPT/COJUD	05/14/2010	096768	225.00
KAPLAN, BRENDA CSR	2010 010-415-024	COURT REPORTER	PER DIEM/COJUD	05/14/2010	096768	450.00
KAPLAN, BRENDA CSR	2010 010-415-024	COURT REPORTER	MILEAGE/COJUD	05/14/2010	096768	264.00
KEY EQUIPMENT FINANCE	2010 010-440-018	EQUIPMENT LEASE	5911122861/TAX	05/14/2010	096769	115.00
LAINE, KEVIN S.	2010 010-408-055	COURT APPOINTED ATTORNEYS	TOLAR, JUSTIN CAIN	05/14/2010	096770	1,525.00
LAKES AREAS SEPTIC & SLUDGE	2010 010-401-099	CONTINGENCY FOR MISCELLANE	DOGWOOD FEST./COJUD	05/14/2010	096771	1,250.00
LAKEMAN TIRE & SERVICE	2010 010-426-030	TIRES, TUBES	10.00 LABOR/TCSD	05/14/2010	096772	10.00
LAKEMAN TIRE & SERVICE	2010 010-426-028	REPAIRS TO VEHICLES	1063/TCSD	05/14/2010	096772	37.45
LASON SYSTEMS, INC.	2010 010-440-007	SUPPLIES	00360/COCLK	05/14/2010	096773	1,539.50
LASON SYSTEMS, INC.	2010 010-440-012	EQUIPMENT REPAIRS	320.00 LABOR/COCLK	05/14/2010	096773	320.00
LAW ENFORCEMENT SYSTEMS	2010 010-426-008	DEPUTIES SUPPLIES	75779/TCSD	05/14/2010	096774	75.00
LOWE'S BUSINESS ACCT/GENB	2010 010-442-010	REPAIRS TO COURTHOUSE	1862007/MAIN.	05/14/2010	096778	397.72
MANN, ROBERT H. ATTY.	2010 010-408-055	COURT APPOINTED ATTORNEYS	STITTEN, JOHN RICHARD	05/14/2010	096780	400.00
MANN, ROBERT H. ATTY.	2010 010-413-055	COURT APPOINTED ATTORNEYS	BARKER, TROY RICHARD	05/14/2010	096780	300.00
MANN, ROBERT H. ATTY.	2010 010-415-055	COURT APPOINTED ATTORNEYS	SHYD, ZACHARY	05/14/2010	096780	200.00
MARSHALL, JAMES A.	2010 010-401-050	ELECTION EXPENSE	LOCAL OPTION ELECTION	05/14/2010	096781	133.00
MARSHALL, LYNETTE	2010 010-401-050	ELECTION EXPENSE	LOCAL OPTION ELECTION	05/14/2010	096782	102.00
MASONIC LODGE-WOODVILLE	2010 010-401-050	ELECTION EXPENSE	LOCAL OPTION ELECTION	05/14/2010	096784	75.00
MODICA BROTHERS	2010 010-426-029	GAS, OIL, GREASE	8.00 LABOR/TCSD	05/14/2010	096786	146.65
MODICA BROTHERS	2010 010-426-050	TIRES, TUBES	64.00 LABOR/TCSD	05/14/2010	096786	549.12
MODICA BROTHERS	2010 010-426-028	REPAIRS TO VEHICLES	65.00 LABOR/TCSD	05/14/2010	096786	154.70
MT. HOPE MASONIC LODGE # 1	2010 010-401-050	ELECTION EXPENSE	LOCAL OPTION ELECTION	05/14/2010	096787	45.00
NET DATA CORP.	2010 010-440-020	SUPPORT SERVICES	770700057/COCLK	05/14/2010	096790	225.00
O'REILLY AUTO PARTS	2010 010-426-028	REPAIRS TO VEHICLES	596507/TCSD	05/14/2010	096793	3.99
O'REILLY AUTO PARTS	2010 010-426-028	REPAIRS TO VEHICLES	596507/TCSD	05/14/2010	096793	305.99
O'REILLY AUTO PARTS	2010 010-426-028	REPAIRS TO VEHICLES	596507/TCSD	05/14/2010	096793	40.00-
O'REILLY AUTO PARTS	2010 010-426-028	REPAIRS TO VEHICLES	596507/TCSD	05/14/2010	096793	108.99
O'REILLY AUTO PARTS	2010 010-426-028	REPAIRS TO VEHICLES	596507/TCSD	05/14/2010	096793	12.00-
PADDIE, MIKE	2010 010-401-050	ELECTION EXPENSE	LOCAL OPTION ELECTION	05/14/2010	096795	50.00
PARKER LUMBER	2010 010-442-010	REPAIRS TO COURTHOUSE	22725/COURTHOUSE	05/14/2010	096796	41.94
PARKER LUMBER	2010 010-442-010	REPAIRS TO COURTHOUSE	22725/COURTHOUSE	05/14/2010	096796	12.28
PARKER LUMBER	2010 010-401-034	SHERIFF'S POSSE	22759/SHERIFF POSSE	05/14/2010	096796	13.73
PARKER LUMBER	2010 010-401-034	SHERIFF'S POSSE	22759/SHERIFF POSSE	05/14/2010	096796	14.21
PARKER LUMBER	2010 010-401-034	SHERIFF'S POSSE	22759/SHERIFF POSSE	05/14/2010	096796	33.76
PARKER LUMBER	2010 010-401-034	SHERIFF'S POSSE	22759/SHERIFF POSSE	05/14/2010	096796	24.17
PARKER LUMBER	2010 010-442-013	REPAIRS AT JUSTICE CENTER	22760/TCSD	05/14/2010	096796	8.99
PILGRIM INSURANCE	2010 010-402-014	BONDS, INSURANCE	E20/COCLK	05/14/2010	096798	4,813.27
PITNEY BOWES GLOBAL FINANC	2010 010-440-018	EQUIPMENT LEASE	1242785/COAUD	05/14/2010	096799	202.00
POPE, MARGARET	2010 010-401-050	ELECTION EXPENSE	LOCAL OPTION ELECTION	05/14/2010	096800	25.00
POWELL, EVERETT	2010 010-401-050	ELECTION EXPENSE	LOCAL OPTION ELECTION	05/14/2010	096801	137.00
POWELL, SHERAN	2010 010-401-050	ELECTION EXPENSE	LOCAL OPTION ELECTION	05/14/2010	096802	112.00
POWERS, MILTON	2010 010-413-012	TRAINING & EDUCATION	MILEAGE/JF3	05/14/2010	096804	550.00
PRODUCTIVITY CENTER, THE	2010 010-426-024	TRAVEL & EDUCATION	TCSD007/TCSD	05/14/2010	096805	630.00
QUILL CORPORATION	2010 010-440-007	SUPPLIES	03338775/EXT	05/14/2010	096806	340.18
QUILL CORPORATION	2010 010-440-007	SUPPLIES	03338775/EXT	05/14/2010	096806	69.59
QUILL CORPORATION	2010 010-429-007	OFFICE SUPPLIES	06076298/TAX	05/14/2010	096806	109.97
RELIABLE OFFICE SUPPLIES	2010 010-402-007	OFFICE SUPPLIES	00077638/COCLK	05/14/2010	096809	35.86

GENERAL FUND
ALL CHECKS

VENDOR NAME	ACCOUNT #	ACCOUNT NAME	ITEM/REASON	DATE	CHECK	AMOUNT
RELIABLE OFFICE SUPPLIES	2010 010-402-007	OFFICE SUPPLIES	00077635/COCLK	05/14/2010	096809	16.00
SANDERSON, JOHN ED	2010 010-401-050	ELECTION EXPENSE	LOCAL OPTION ELECTION	05/14/2010	096814	157.00
SCOTT MERRIMAN, INC.	2010 010-402-007	OFFICE SUPPLIES	TY02/TREAS	05/14/2010	096815	237.22
SERVICE BY SCOTT	2010 010-442-013	REPAIRS AT JUSTICE CENTER	2617/TCSD	05/14/2010	096817	1,101.38
SOUTHEAST TEXAS FORENSIC C	2010 010-401-043	AUTOPSIES	MCINNIS, MICHELLE R.	05/14/2010	096819	1,500.00
SPARKLETT'S & SIERRA SPRING	2010 010-420-007	OFFICE SUPPLIES	21549393631064/TAX	05/14/2010	096820	22.33
STAMPS OFFICE SUPPLY	2010 010-426-007	OFFICE SUPPLIES	062047/TCSD	05/14/2010	096821	282.05
STEVENS, INOGENE	2010 010-401-050	ELECTION EXPENSE	LOCAL OPTION ELECTION	05/14/2010	096822	96.00
STEWART, ELSIE	2010 010-401-050	ELECTION EXPENSE	LOCAL OPTION ELECTION	05/14/2010	096823	129.00
STORY-WRIGHT	2010 010-422-007	OFFICE SUPPLIES	104307/COAUD	05/14/2010	096824	25.96
STORY-WRIGHT	2010 010-422-007	OFFICE SUPPLIES	104307/COAUD	05/14/2010	096824	2.97
STORY-WRIGHT	2010 010-440-007	SUPPLIES	104983/JP1	05/14/2010	096824	219.98
STORY-WRIGHT	2010 010-440-007	SUPPLIES	105136/TAX	05/14/2010	096824	139.96
STORY-WRIGHT	2010 010-420-007	OFFICE SUPPLIES	105136/TAX	05/14/2010	096824	2.98
STORY-WRIGHT	2010 010-420-007	OFFICE SUPPLIES	105136/TAX	05/14/2010	096824	154.97
STORY-WRIGHT	2010 010-440-007	SUPPLIES	104307/COAUD	05/14/2010	096824	35.55
STORY-WRIGHT	2010 010-422-007	OFFICE SUPPLIES	104307/COAUD	05/14/2010	096824	10.98
SULLIVANS HARDWARE	2010 010-419-007	OFFICE SUPPLIES	KEYS/CDA	05/14/2010	096825	5.16
SULLIVANS HARDWARE	2010 010-442-010	REPAIRS TO COURTHOUSE	COURTHOUSE MAIN.	05/14/2010	096825	280.26
SULLIVANS HARDWARE	2010 010-442-013	REPAIRS AT JUSTICE CENTER	JUSTICE CTR./TCSD	05/14/2010	096825	35.61
SULLIVANS HARDWARE	2010 010-442-013	REPAIRS AT JUSTICE CENTER	JUSTICE CTR./TCSD	05/14/2010	096825	19.51
SYSDO FOOD SERVICES	2010 010-427-036	PRISONER MEALS	819219/JAIL	05/14/2010	096826	2,518.53
SYSDO FOOD SERVICES	2010 010-427-036	PRISONER MEALS	819219/JAIL	05/14/2010	096826	2,412.34
TCH FAMILY MEDICAL CLINIC	2010 010-401-098	MISCELLANEOUS EXPENSE	KNOTT, LISA	05/14/2010	096828	69.00
TCH FAMILY MEDICAL CLINIC	2010 010-401-098	MISCELLANEOUS EXPENSE	PHELPS, RICHARD	05/14/2010	096828	69.00
TCH FAMILY MEDICAL CLINIC	2010 010-401-098	MISCELLANEOUS EXPENSE	WHITE, JIMMY	05/14/2010	096828	69.00
TEXAS ASSOCIATION OF COUNT	2010 010-421-012	EDUCATION, GOVERNMENT RELAT	2010 ANNUAL EXPO/COJUD	05/14/2010	096832	260.00
TEXAS IMAGING SYSTEMS, INC	2010 010-440-007	SUPPLIES	LK0124/COCLK	05/14/2010	096833	581.60
TEXAS PUBLIC HEALTH ASSOCI	2010 010-402-012	TRAVEL, TRAINING & EDUCATIO	MATKIN, SANDRA/VITAL ST.	05/14/2010	096834	90.00
TEXAS PUBLIC HEALTH ASSOCI	2010 010-402-012	TRAVEL, TRAINING & EDUCATIO	JOHNSTON, WANDA/VITAL ST	05/14/2010	096834	90.00
TIMBERLINE NURSERY, INC	2010 010-442-010	REPAIRS TO COURTHOUSE	215040/COURTHOUSE	05/14/2010	096836	246.50
TIMBERMANS SUPPLY	2010 010-442-010	REPAIRS TO COURTHOUSE	12032/COMM.SRV.	05/14/2010	096837	65.74
TIMBERMANS SUPPLY	2010 010-442-010	REPAIRS TO COURTHOUSE	75.00 LABOR/COMM. SRV.	05/14/2010	096837	152.39
TIMBERMANS SUPPLY	2010 010-442-010	REPAIRS TO COURTHOUSE	25.00 LABOR/COMM. SRV.	05/14/2010	096837	37.85
TIMBERMANS SUPPLY	2010 010-442-010	REPAIRS TO COURTHOUSE	12032/COMM.SRV.	05/14/2010	096837	3.00
TIMBERMANS SUPPLY	2010 010-442-010	REPAIRS TO COURTHOUSE	12032/COMM.SRV.	05/14/2010	096837	42.04
TIMBERMANS SUPPLY	2010 010-442-010	REPAIRS TO COURTHOUSE	12032/COMM.SRV.	05/14/2010	096837	10.34
TOLARS FEED AND OUTDOOR SU	2010 010-426-023	ANIMAL CONTROL	323609/TCSD	05/14/2010	096838	147.58
TOLARS FEED AND OUTDOOR SU	2010 010-426-023	ANIMAL CONTROL	326036/TCSD	05/14/2010	096838	22.40
TOLARS FEED AND OUTDOOR SU	2010 010-426-023	ANIMAL CONTROL	327119/TCSD	05/14/2010	096838	22.50
TOLARS FEED AND OUTDOOR SU	2010 010-426-023	ANIMAL CONTROL	328008/TCSD	05/14/2010	096838	6.50
TOLARS FEED AND OUTDOOR SU	2010 010-426-023	ANIMAL CONTROL	328297/TCSD	05/14/2010	096838	22.50
TYCO GENERAL FEED & RANCH	2010 010-442-010	REPAIRS TO COURTHOUSE	334722/MAIN.	05/14/2010	096840	29.70
TYLER COUNTY AUTO PARTS	2010 010-442-010	REPAIRS TO COURTHOUSE	431916/MAIN	05/14/2010	096842	15.22
TYLER COUNTY BOOSTER	2010 010-401-013	ADVERTISING	0008281/COAUD	05/14/2010	096843	84.00
TYLER COUNTY BOOSTER	2010 010-401-050	ELECTION EXPENSE	0008246/COCLK	05/14/2010	096843	45.00
TYLER COUNTY BOOSTER	2010 010-401-050	ELECTION EXPENSE	0008244/COCLK	05/14/2010	096843	35.50
TYLER COUNTY HOSPITAL	2010 010-401-098	MISCELLANEOUS EXPENSE	WHITE, JIMMY D.	05/14/2010	096844	55.00
TYLER COUNTY HOSPITAL	2010 010-401-098	MISCELLANEOUS EXPENSE	RYAN, PHILLIP RAY JR.	05/14/2010	096844	40.00
TYLER COUNTY HOSPITAL	2010 010-427-043	PRISONER MEDICAL	RADFORD, JAMES WESTLEY	05/14/2010	096844	232.50
TYLER COUNTY HOSPITAL	2010 010-427-043	PRISONER MEDICAL	CHRISTOPHER, ALVIN J.	05/14/2010	096844	374.60
TYLER COUNTY HOSPITAL	2010 010-427-043	PRISONER MEDICAL	HOOKS, SANDRA A.	05/14/2010	096844	53.30
U PUMP IT	2010 010-442-010	REPAIRS TO COURTHOUSE	UF TYCO COURTHOUSE/MAIN.	05/14/2010	096850	641.14
U PUMP IT	2010 010-426-029	BAS, DIL, GREASE	UF TYLERCDSH/TCSD	05/14/2010	096850	5,796.18
UPS	2010 010-402-007	OFFICE SUPPLIES	000329942180/COCLK	05/14/2010	096851	42.27

GENERAL FUND
ALL CHECKS

VENDOR NAME	ACCOUNT #	ACCOUNT NAME	ITEM/REASON	DATE	CHECK	AMOUNT
US FLAG AND FLAGPOLE	2010 010-442-010	REPAIRS TO COURTHOUSE	10-0687/COJUD	05/14/2010	096852	57.50
WAL-MART COMMUNITY/GEMB	2010 010-430-007	OFFICE SUPPLIES	5595/DFB	05/14/2010	096853	74.34
WAL-MART COMMUNITY/GEMB	2010 010-440-007	SUPPLIES	6899/DBCLK	05/14/2010	096853	22.97
WAL-MART COMMUNITY/GEMB	2010 010-442-010	REPAIRS TO COURTHOUSE	6915/COJUD	05/14/2010	096853	177.04
WAL-MART COMMUNITY/GEMB	2010 010-442-007	JANITORS SUPPLIES	6915/COJUD	05/14/2010	096853	293.45
WAL-MART COMMUNITY/GEMB	2010 010-421-007	OFFICE SUPPLIES	6915/COJUD	05/14/2010	096853	15.77
WAL-MART COMMUNITY/GEMB	2010 010-426-007	OFFICE SUPPLIES	7809/TCSD	05/14/2010	096853	194.87
WAL-MART COMMUNITY/GEMB	2010 010-427-010	JAIL SUPPLIES	7809/TCSD	05/14/2010	096853	65.09
WAL-MART COMMUNITY/GEMB	2010 010-426-008	DEPUTIES SUPPLIES	7809/TCSD	05/14/2010	096853	245.92
WALLING SIGNS & GRAPHICS	2010 010-442-010	REPAIRS TO COURTHOUSE	TYCOJU/COJUD	05/14/2010	096854	23.50
WALLING SIGNS & GRAPHICS	2010 010-427-010	JAIL SUPPLIES	6777/TCSD	05/14/2010	096854	21.95
WEBSTORM COMPUTERS	2010 010-440-022	PROFESSIONAL SERVICES	35.00 LABOR/CDA	05/14/2010	096856	110.00
WEBSTORM COMPUTERS	2010 010-440-022	PROFESSIONAL SERVICES	35.00 LABOR/EOC	05/14/2010	096856	35.00
WEBSTORM COMPUTERS	2010 010-426-007	OFFICE SUPPLIES	75.00 LABOR/TCSD	05/14/2010	096856	75.00
WEBSTORM COMPUTERS	2010 010-426-007	OFFICE SUPPLIES	1256/TCSD	05/14/2010	096856	144.00
WEBSTORM COMPUTERS	2010 010-426-007	OFFICE SUPPLIES	50.00 LABOR/TCSD	05/14/2010	096856	50.00
WHITSON, WANA	2010 010-401-050	ELECTION EXPENSE	LOCAL OPTION ELECTION	05/14/2010	096858	104.00
WHS HORTICULTURE CLASS	2010 010-442-010	REPAIRS TO COURTHOUSE	REINB./COJUD	05/14/2010	096859	175.00
WILSON, HUGH E.	2010 010-401-050	ELECTION EXPENSE	LOCAL OPTION ELECTION	05/14/2010	096860	108.00
WOOD, ROBERT M.	2010 010-401-050	ELECTION EXPENSE	LOCAL OPTION ELECTION	05/14/2010	096861	50.00
WOODFORD, MICHAEL S.	2010 010-401-050	ELECTION EXPENSE	LOCAL OPTION ELECTION	05/14/2010	096862	104.00
XEROX CORPORATION	2010 010-440-015	SERVICE CONTRACTS	711323717/DBCLK	05/14/2010	096863	88.00
TOTAL CHECKS WRITTEN						161,929.76
TOTAL VOID CHECKS						0.00
TOTAL CHECK AMOUNT						161,929.76

GENERAL ROAD & BRIDGE
ALL CHECKS

VENDOR NAME	ACCOUNT #	ACCOUNT NAME	ITEM/REASON	DATE	CHECK	AMOUNT
TYLER COUNTY PCT I	2010 020-496-021	TRANS/R&B I===.222129	MTHLY.TRANS. MAY 2010	05/14/2010	096845	76,300.47
TYLER COUNTY PCT II	2010 020-496-022	TRANS/R&B II===.204447	MTHLY.TRANS. MAY 2010	05/14/2010	096846	70,410.85
TYLER COUNTY PCT III	2010 020-496-023	TRANS/R&B III==.298334	MTHLY.TRANS. MAY 2010	05/14/2010	096847	102,762.43
TYLER COUNTY PCT IV	2010 020-496-024	TRANS/R&B IV===.275040	MTHLY.TRANS. MAY 2010	05/14/2010	096848	94,722.84
TOTAL CHECKS WRITTEN						344,396.59
TOTAL VOID CHECKS						0.00
TOTAL CHECK AMOUNT						344,396.59

ROAD & BRIDGE I
ALL CHECKS

VENDOR NAME	ACCOUNT #	ACCOUNT NAME	ITEM/REASON	DATE	CHECK	AMOUNT
FICA	2010 021-502-100	SALARIES PAYABLE	FICA TAXES	05/14/2010	096537	567.19
FICA	2010 021-448-002	SOCIAL SECURITY	FICA TAXES	05/14/2010	096537	567.19
FIT	2010 021-202-100	SALARIES PAYABLE	FIT TAXES	05/14/2010	096538	734.54
FREEMAN, KIMBERLY D.	2010 021-202-100	SALARIES PAYABLE	C#11883701/HAROLD FREEMAN	05/14/2010	096539	200.00
MEDICARE - ELECTRONIC TRAN	2010 021-202-100	SALARIES PAYABLE	MEDICARE TAXES	05/14/2010	096546	192.65
MEDICARE - ELECTRONIC TRAN	2010 021-448-002	SOCIAL SECURITY	MEDICARE TAXES	05/14/2010	096546	192.65
NET SALARIES	2010 021-202-100	SALARIES PAYABLE	NET SALARIES	05/14/2010	096547	6,476.56
A T & T	2010 021-451-035	UTILITIES	36524545/APRIL 2010	05/14/2010	096700	40.95
A T & T LONG DISTANCE	2010 021-451-035	UTILITIES	850088/LD	05/14/2010	096701	2.71
A-1 JOHNNY PORTABLE TOILET	2010 021-451-028	MACHINERY MAINTENANCE	TY CD PCT1	05/14/2010	096702	55.00
BEAUMONT TRACTOR COMPANY,	2010 021-451-028	MACHINERY MAINTENANCE	TY CD PCT1	05/14/2010	096709	64.80
BEAUMONT TRACTOR COMPANY,	2010 021-451-028	MACHINERY MAINTENANCE	TY CD PCT1	05/14/2010	096709	215.39
BROOKSIDE EQUIP SALES	2010 021-451-028	MACHINERY MAINTENANCE	TY CD PCT1	05/14/2010	096716	512.22
BRYAN AND BRYAN ASPHALT RD	2010 021-451-032	ROAD MATERIAL	TY CD PCT1	05/14/2010	096717	12,222.00
C & M RENTAL, L.P.	2010 021-451-032	ROAD MATERIAL	TY CD PCT1	05/14/2010	096719	262.20
EDNO SIGNS, LLC	2010 021-451-028	MACHINERY MAINTENANCE	TY CD PCT1	05/14/2010	096737	237.92
GARDNER OIL, INC.	2010 021-451-029	GAS, OIL, GREASE	TYCD PCT1	05/14/2010	096745	147.75
GARDNER OIL, INC.	2010 021-451-029	GAS, OIL, GREASE	TYCD PCT1	05/14/2010	096745	3,682.47
GARDNER OIL, INC.	2010 021-451-029	GAS, OIL, GREASE	TYCD PCT1	05/14/2010	096745	2,346.14
GRADEMASTER BLADE OF TEXAS	2010 021-453-045	PURCHASE OF EQUIPMENT	TY CD PCT1	05/14/2010	096747	2,650.00
HSBC BUSINESS SOLUTIONS	2010 021-451-028	MACHINERY MAINTENANCE	0016-0100/PCT1	05/14/2010	096755	430.74
HSBC BUSINESS SOLUTIONS	2010 021-451-028	MACHINERY MAINTENANCE	0016-0100/PCT1	05/14/2010	096755	47.16
JERRYS SAW SHOP	2010 021-451-028	MACHINERY MAINTENANCE	TY CD PCT1	05/14/2010	096765	26.99
LAKES AREAS SEPTIC & SLUDGE	2010 021-451-028	MACHINERY MAINTENANCE	TY CD PCT1	05/14/2010	096771	25.00
LAKES AREAS SEPTIC & SLUDGE	2010 021-451-028	MACHINERY MAINTENANCE	TY CD PCT1	05/14/2010	096771	25.00
LAKES AREAS SEPTIC & SLUDGE	2010 021-451-028	MACHINERY MAINTENANCE	TY CD PCT1	05/14/2010	096771	25.00
MODICA BROTHERS	2010 021-451-030	TIRES, TUBES	0-LABOR/PCT1	05/14/2010	096786	133.40
MODICA BROTHERS	2010 021-451-030	TIRES, TUBES	56.00-LABOR/PCT1	05/14/2010	096786	56.00
MUSTANG CAT	2010 021-451-028	MACHINERY MAINTENANCE	TY CD PCT1	05/14/2010	096788	15.28
MUSTANG CAT	2010 021-451-028	MACHINERY MAINTENANCE	TY CD PCT1	05/14/2010	096788	53.62
MUSTANG CAT	2010 021-451-028	MACHINERY MAINTENANCE	TY CD PCT1	05/14/2010	096788	427.20
O'REILLY AUTO PARTS	2010 021-451-028	MACHINERY MAINTENANCE	TY CD PCT1	05/14/2010	096793	28.95
O'REILLY AUTO PARTS	2010 021-451-028	MACHINERY MAINTENANCE	TY CD PCT1	05/14/2010	096793	15.99
O'REILLY AUTO PARTS	2010 021-451-028	MACHINERY MAINTENANCE	TY CD PCT1	05/14/2010	096793	47.99
O'REILLY AUTO PARTS	2010 021-451-028	MACHINERY MAINTENANCE	TY CD PCT1	05/14/2010	096793	29.99
O'REILLY AUTO PARTS	2010 021-451-028	MACHINERY MAINTENANCE	TY CD PCT1	05/14/2010	096793	59.98-
O'REILLY AUTO PARTS	2010 021-451-028	MACHINERY MAINTENANCE	TY CD PCT1	05/14/2010	096793	3.98
PARKER LUMBER	2010 021-451-028	MACHINERY MAINTENANCE	22700/PCT1	05/14/2010	096796	12.57
PARKER LUMBER	2010 021-451-028	MACHINERY MAINTENANCE	22700/PCT1	05/14/2010	096796	5.27
PARKER LUMBER	2010 021-451-028	MACHINERY MAINTENANCE	22700/PCT1	05/14/2010	096796	7.58
PARKER LUMBER	2010 021-451-028	MACHINERY MAINTENANCE	22700/PCT1	05/14/2010	096796	17.93
PARKER LUMBER	2010 021-451-028	MACHINERY MAINTENANCE	22700/PCT1	05/14/2010	096796	399.21
PARKER LUMBER	2010 021-451-028	MACHINERY MAINTENANCE	22700/PCT1	05/14/2010	096796	17.96
PARKER LUMBER	2010 021-451-028	MACHINERY MAINTENANCE	22700/PCT1	05/14/2010	096796	17.99
PARKER LUMBER	2010 021-451-028	MACHINERY MAINTENANCE	22700/PCT1	05/14/2010	096796	20.20
R&D HARDWARE & FEED	2010 021-451-028	MACHINERY MAINTENANCE	TY CD PCT1	05/14/2010	096807	142.61
SENECA WATER SUPPLY CORP.	2010 021-451-035	UTILITIES	166/PCT.1 BARN	05/14/2010	096816	15.01
STORY-WRIGHT	2010 021-451-040	MISCELLANEOUS SUPPLIES	105828/PCT.1	05/14/2010	096824	71.40
STORY-WRIGHT	2010 021-451-040	MISCELLANEOUS SUPPLIES	105828/PCT.1	05/14/2010	096824	111.02
STORY-WRIGHT	2010 021-451-040	MISCELLANEOUS SUPPLIES	105140/PCT.1	05/14/2010	096824	19.50
SULLIVANS HARDWARE	2010 021-451-028	MACHINERY MAINTENANCE	PCT.1	05/14/2010	096825	1.49
SULLIVANS HARDWARE	2010 021-451-028	MACHINERY MAINTENANCE	PCT.1	05/14/2010	096825	15.78
TEJAS EQUIPMENT INC	2010 021-451-028	MACHINERY MAINTENANCE	TY CD PCT1	05/14/2010	096830	87.00
TEJAS EQUIPMENT INC	2010 021-451-028	MACHINERY MAINTENANCE	TY CD PCT1	05/14/2010	096830	31.26
TELSTAR SPECIALTY PRODUCTS	2010 021-451-040	MISCELLANEOUS SUPPLIES	6375/PCT. 1	05/14/2010	096831	45.95

ROAD & BRIDGE I
ALL CHECKS

VENDOR NAME	ACCOUNT #	ACCOUNT NAME	ITEM/REASON	DATE	CHECK	AMOUNT
TIMBERMANS SUPPLY	2010 021-451-028	MACHINERY MAINTENANCE	12023/PCT.1	05/14/2010	096837	185.95
TIMBERMANS SUPPLY	2010 021-451-028	MACHINERY MAINTENANCE	12023/PCT.1	05/14/2010	096837	42.57
TIMBERMANS SUPPLY	2010 021-451-028	MACHINERY MAINTENANCE	12023/PCT.1	05/14/2010	096837	15.88
TIMBERMANS SUPPLY	2010 021-451-028	MACHINERY MAINTENANCE	12023/PCT.1	05/14/2010	096837	6.29
TRACTOR SUPPLY CREDIT PLAN	2010 021-451-028	MACHINERY MAINTENANCE	02794028/PCT1	05/14/2010	096839	342.76
TYLER COUNTY AUTO PARTS	2010 021-451-028	MACHINERY MAINTENANCE	7050/PCT1	05/14/2010	096842	6.26
TYLER COUNTY AUTO PARTS	2010 021-451-028	MACHINERY MAINTENANCE	7050/PCT1	05/14/2010	096842	10.37
TYLER COUNTY AUTO PARTS	2010 021-451-028	MACHINERY MAINTENANCE	7050/PCT1	05/14/2010	096842	12.48
TYLER COUNTY AUTO PARTS	2010 021-451-028	MACHINERY MAINTENANCE	7050/PCT1	05/14/2010	096842	43.86
TYLER COUNTY TRACTOR	2010 021-451-028	MACHINERY MAINTENANCE	1356/PCT1	05/14/2010	096849	5.45
WAL-MART COMMUNITY/BEMB	2010 021-451-028	MACHINERY MAINTENANCE	5371/PCT.1	05/14/2010	096853	9.44
WAL-MART COMMUNITY/BEMB	2010 021-451-040	MISCELLANEOUS SUPPLIES	5371/PCT.1	05/14/2010	096853	45.02
TOTAL CHECKS WRITTEN						36,141.27
TOTAL VOID CHECKS						0.00
TOTAL CHECK AMOUNT						36,141.27

ROAD & BRIDGE II
ALL CHECKS

VENDOR NAME	ACCOUNT #	ACCOUNT NAME	ITEM/REASON	DATE	CHECK	AMOUNT
FICA	2010 022-202-100	SALARIES PAYABLE	FICA TAXES	05/14/2010	096537	558.80
FICA	2010 022-448-002	SOCIAL SECURITY	FICA TAXES	05/14/2010	096537	558.80
FIT	2010 022-202-100	SALARIES PAYABLE	FIT TAXES	05/14/2010	096538	602.02
MEDICARE - ELECTRONIC TRAN	2010 022-202-100	SALARIES PAYABLE	MEDICARE TAXES	05/14/2010	096546	130.67
MEDICARE - ELECTRONIC TRAN	2010 022-448-002	SOCIAL SECURITY	MEDICARE TAXES	05/14/2010	096546	130.67
NET SALARIES	2010 022-202-100	SALARIES PAYABLE	NET SALARIES	05/14/2010	096547	6,767.59
STOKES, DEBORAH D.	2010 022-202-100	SALARIES PAYABLE	C#15842/JOHNNY JAMES	05/14/2010	096551	225.00
A T & T	2010 022-451-035	UTILITIES	36524545/APRIL 2010	05/14/2010	096700	47.92
A T & T LONG DISTANCE	2010 022-451-035	UTILITIES	250086/LD	05/14/2010	096701	2.70
BEAUMONT FREIGHTLINER-STER	2010 022-451-028	MACHINERY MAINTENANCE	102352/PCT.2	05/14/2010	096702	69.84
BILLY WILLIAMS TRUCKING	2010 022-451-032	ROAD MATERIAL	TY CD PCT2	05/14/2010	096711	1,545.06
CONSOLIDATED COMMUNICATION	2010 022-451-035	UTILITIES	926-967-2845/0/PCT.2	05/14/2010	096725	14.02
B & J TIRE, INC	2010 022-451-030	TIRES, TUBES	4-M8RT61/PCT2	05/14/2010	096729	1,256.00
EAST TEXAS MACHINE	2010 022-451-028	MACHINERY MAINTENANCE	100.00-LABOR/PCT2	05/14/2010	096736	171.20
ECONO SIGNS, LLC	2010 022-451-028	MACHINERY MAINTENANCE	TYLCO PCT2	05/14/2010	096737	168.70
ECONO SIGNS, LLC	2010 022-451-028	MACHINERY MAINTENANCE	TYLCO PCT2	05/14/2010	096737	40.38
GARDNER OIL, INC.	2010 022-451-029	GAS, OIL, GREASE	TYCD PCT2	05/14/2010	096745	3,666.69
GARDNER OIL, INC.	2010 022-451-029	GAS, OIL, GREASE	TYCD PCT2	05/14/2010	096745	4,170.43
GULF WELDING SUPPLY CO.	2010 022-451-028	MACHINERY MAINTENANCE	030133/PCT2	05/14/2010	096746	31.50
H3BC BUSINESS SOLUTIONS	2010 022-451-028	MACHINERY MAINTENANCE	0112/PCT2	05/14/2010	096755	244.52
INTERSTATE BILLING SERVICE	2010 022-451-028	MACHINERY MAINTENANCE	215692/PCT2	05/14/2010	096760	82.59
JACK ALEXANDER,LTD.	2010 022-451-032	ROAD MATERIAL	TYLCO PCT2	05/14/2010	096763	961.29
JERRYS SAW SHOP	2010 022-451-028	MACHINERY MAINTENANCE	TY CD PCT2	05/14/2010	096765	13.95
MODICA BROTHERS	2010 022-451-030	TIRES, TUBES	7.50-LABOR/PCT2	05/14/2010	096786	26.00
MODICA BROTHERS	2010 022-451-030	TIRES, TUBES	8.50-LABOR/PCT2	05/14/2010	096786	364.75
MODICA BROTHERS	2010 022-451-030	TIRES, TUBES	45.00-LABOR/PCT2	05/14/2010	096786	70.00
MODICA BROTHERS	2010 022-451-030	TIRES, TUBES	45.00-LABOR/PCT2	05/14/2010	096786	50.95
MODICA BROTHERS	2010 022-451-030	TIRES, TUBES	45.00-LABOR/PCT2	05/14/2010	096786	52.75
MODICA BROTHERS	2010 022-451-030	TIRES, TUBES	10.00-LABOR/PCT2	05/14/2010	096786	10.00
MODICA BROTHERS	2010 022-451-030	TIRES, TUBES	45.00-LABOR/PCT2	05/14/2010	096786	45.00
MODICA BROTHERS	2010 022-451-030	TIRES, TUBES	45.00-LABOR/PCT2	05/14/2010	096786	77.95
MUSTANG CAT	2010 022-451-028	MACHINERY MAINTENANCE	0792910/PCT.2	05/14/2010	096788	427.80
MUSTANG CAT	2010 022-451-028	MACHINERY MAINTENANCE	0792910/PCT.2	05/14/2010	096788	66.07
NORTH AMERICAN PROCUREMENT	2010 022-451-032	ROAD MATERIAL	TY CD PCT2	05/14/2010	096792	1,200.00
O'REILLY AUTO PARTS	2010 022-451-028	MACHINERY MAINTENANCE	591682/PCT2	05/14/2010	096793	60.84
O'REILLY AUTO PARTS	2010 022-451-028	MACHINERY MAINTENANCE	591682/PCT2	05/14/2010	096793	51.27
POWER FLAN	2010 022-451-028	MACHINERY MAINTENANCE	87001-13283/PCT2	05/14/2010	096803	3,977.34
POWER FLAN	2010 022-451-028	MACHINERY MAINTENANCE	87001-13283/PCT2	05/14/2010	096803	536.72
STORY-WRIGHT	2010 022-451-040	MISCELLANEOUS SUPPLIES	105140/PCT.2	05/14/2010	096824	19.50
SULLIVANS HARDWARE	2010 022-451-028	MACHINERY MAINTENANCE	106168/PCT.2	05/14/2010	096825	26.99
SULLIVANS HARDWARE	2010 022-451-028	MACHINERY MAINTENANCE	103287/PCT.2	05/14/2010	096825	40.95
TARVER, BARNEY	2010 022-451-032	ROAD MATERIAL	TY CD PCT2	05/14/2010	096827	275.00
TIMBERMANS SUPPLY	2010 022-451-028	MACHINERY MAINTENANCE	12024/PCT2	05/14/2010	096837	11.84
TIMBERMANS SUPPLY	2010 022-451-028	MACHINERY MAINTENANCE	12024/PCT2	05/14/2010	096837	8.29
TIMBERMANS SUPPLY	2010 022-451-028	MACHINERY MAINTENANCE	12024/PCT2	05/14/2010	096837	92.21
TIMBERMANS SUPPLY	2010 022-451-028	MACHINERY MAINTENANCE	12024/PCT2	05/14/2010	096837	24.73
TIMBERMANS SUPPLY	2010 022-451-028	MACHINERY MAINTENANCE	12024/PCT2	05/14/2010	096837	44.33
TIMBERMANS SUPPLY	2010 022-451-028	MACHINERY MAINTENANCE	12024/PCT2	05/14/2010	096837	126.00
TIMBERMANS SUPPLY	2010 022-451-028	MACHINERY MAINTENANCE	12024/PCT2	05/14/2010	096837	340.33
TIMBERMANS SUPPLY	2010 022-451-028	MACHINERY MAINTENANCE	12024/PCT2	05/14/2010	096837	61.99
TYLER COUNTY AUTO PARTS	2010 022-451-028	MACHINERY MAINTENANCE	7051/PCT2	05/14/2010	096842	51.97
TYLER COUNTY PCT 1	2010 022-451-021	TRANSFER TO R&B, PCT 1	MTHLY.TRANS. MAY 2010	05/14/2010	096845	1,432.00
U PUMF IT	2010 022-451-029	GAS, OIL, GREASE	UP TYLERCCPE	05/14/2010	096850	456.73
WAL-MART COMMUNITY/GENB	2010 022-451-040	MISCELLANEOUS SUPPLIES	TY CD PCT2	05/14/2010	096853	215.84

ROAD & BRIDGE II
ALL CHECKS

VENDOR NAME	ACCOUNT #	ACCOUNT NAME	ITEM/REASON	DATE	CHECK	AMOUNT

					TOTAL CHECKS WRITTEN	32,742.66
					TOTAL VOID CHECKS	0.00

					TOTAL CHECK AMOUNT	32,742.66

ROAD & BRIDGE III
ALL CHECKS

VENDOR NAME	ACCOUNT #	ACCOUNT NAME	ITEM/REASON	DATE	CHECK	AMOUNT
FICA	2010 023-202-100	SALARIES PAYABLE	FICA TAXES	05/14/2010	096537	689.59
FICA	2010 023-448-002	SOCIAL SECURITY	FICA TAXES	05/14/2010	096537	689.59
FIT	2010 023-202-100	SALARIES PAYABLE	FIT TAXES	05/14/2010	096538	593.91
MEDICARE - ELECTRONIC TRAN	2010 023-202-100	SALARIES PAYABLE	MEDICARE TAXES	05/14/2010	096546	161.26
MEDICARE - ELECTRONIC TRAN	2010 023-448-002	SOCIAL SECURITY	MEDICARE TAXES	05/14/2010	096546	161.26
NET SALARIES	2010 023-202-100	SALARIES PAYABLE	NET SALARIES	05/14/2010	096547	8,685.96
A T & T	2010 023-451-035	UTILITIES	36524545/APRIL 2010	05/14/2010	096700	47.98
A T & T LONG DISTANCE	2010 023-451-035	UTILITIES	250086/LD	05/14/2010	096701	2.70
BILLY WILLIAMS TRUCKING	2010 023-451-032	ROAD MATERIAL	170407-170408/PCT.3	05/14/2010	096711	529.17
DOGGET MACHINERY SERVICES	2010 023-451-028	MACHINERY MAINTENANCE	411.40-LABOR/PCTS	05/14/2010	096735	846.27
GARDNER OIL, INC.	2010 023-451-029	GAS, OIL, GREASE	TY20 PCT3	05/14/2010	096745	3,147.79
J & M DOZER	2010 023-451-032	ROAD MATERIAL	100A/PCT.3	05/14/2010	096762	6,000.00
LAKEWAY TIRE & SERVICE	2010 023-451-030	TIRES, TUBES	101.50-LABOR/PCT 3	05/14/2010	096772	151.45
LAKEWAY TIRE & SERVICE	2010 023-451-030	TIRES, TUBES	77.50-LABOR/PCT 3	05/14/2010	096772	77.50
LAKEWAY TIRE & SERVICE	2010 023-451-030	TIRES, TUBES	20.00-LABOR/PCT 3	05/14/2010	096772	22.95
LEHMAN'S PIPE AND STEEL, I	2010 023-451-028	MACHINERY MAINTENANCE	TY 00 PCT 3	05/14/2010	096775	125.73
LONE STAR ELECTRIC	2010 023-451-028	MACHINERY MAINTENANCE	255.00-LABOR/PCT 3	05/14/2010	096777	346.31
LUCKY, CRAIG	2010 023-451-030	TIRES, TUBES	TIRES/PCT. 3	05/14/2010	096779	600.00
MARTINS TRU-VALUE HDWE.	2010 023-451-040	MISCELLANEOUS SUPPLIES	TY 00 PCT 3	05/14/2010	096783	39.68
MARTINS TRU-VALUE HDWE.	2010 023-451-028	MACHINERY MAINTENANCE	TY 00 PCT 3	05/14/2010	096783	133.07
RURAL PIPE AND SUPPLY	2010 023-451-031	CULVERTS	TY 00 PCT 3	05/14/2010	096813	803.40
RURAL PIPE AND SUPPLY	2010 023-451-031	CULVERTS	TY 00 PCT 3	05/14/2010	096813	1,342.60
SEXTON, MATTIE M	2010 023-451-040	MISCELLANEOUS SUPPLIES	TY 00 PCT 3	05/14/2010	096818	35.00
SEXTON, MATTIE M	2010 023-451-040	MISCELLANEOUS SUPPLIES	TY 00 PCT 3	05/14/2010	096818	35.00
STORY-WRIGHT	2010 023-451-040	MISCELLANEOUS SUPPLIES	105140/PCT.3	05/14/2010	096824	19.50
STORY-WRIGHT	2010 023-451-040	MISCELLANEOUS SUPPLIES	105140/PCT 3	05/14/2010	096824	2.57
STORY-WRIGHT	2010 023-451-040	MISCELLANEOUS SUPPLIES	105140/PCT 3	05/14/2010	096824	6.67
THE SIGN MEN	2010 023-451-028	MACHINERY MAINTENANCE	TY 00 PCT 3	05/14/2010	096835	76.62
TIMBERMANS SUPPLY	2010 023-451-028	MACHINERY MAINTENANCE	12025/PCT 3	05/14/2010	096837	62.99
TIMBERMANS SUPPLY	2010 023-451-040	MISCELLANEOUS SUPPLIES	12025/PCT 3	05/14/2010	096837	13.29
TIMBERMANS SUPPLY	2010 023-451-029	GAS, OIL, GREASE	12025/PCT 3	05/14/2010	096837	50.10
TIMBERMANS SUPPLY	2010 023-451-029	GAS, OIL, GREASE	12025/PCT 3	05/14/2010	096837	101.21
TYLER COUNTY AUTO PARTS	2010 023-451-028	MACHINERY MAINTENANCE	7052/PCT 3	05/14/2010	096842	74.32
U PUMP IT	2010 023-451-029	GAS, OIL, GREASE	UP TY00PCT3	05/14/2010	096850	33.52
WAL-MART COMMUNITY/GENE	2010 023-451-040	MISCELLANEOUS SUPPLIES	00201539/PCT1	05/14/2010	096853	11.44

TOTAL CHECKS WRITTEN	25,917.74
TOTAL VOID CHECKS	0.00
TOTAL CHECK AMOUNT	25,917.74

ROAD & BRIDGE IV
ALL CHECKS

VENDOR NAME	ACCOUNT #	ACCOUNT NAME	ITEM/REASON	DATE	CHECK	AMOUNT
FICA	2010 024-202-100	SALARIES PAYABLE	FICA TAXES	05/14/2010	096537	593.41
FICA	2010 024-448-002	SOCIAL SECURITY	FICA TAXES	05/14/2010	096537	593.41
FIT	2010 024-202-100	SALARIES PAYABLE	FIT TAXES	05/14/2010	096538	720.70
GULF EMPLOYEES CREDIT UNIO	2010 024-202-100	SALARIES PAYABLE	GULF CREDIT UNION	05/14/2010	096541	75.00
MEDICARE - ELECTRONIC TRAN	2010 024-202-100	SALARIES PAYABLE	MEDICARE TAXES	05/14/2010	096546	138.77
MEDICARE - ELECTRONIC TRAN	2010 024-448-002	SOCIAL SECURITY	MEDICARE TAXES	05/14/2010	096546	138.77
NET SALARIES	2010 024-202-100	SALARIES PAYABLE	NET SALARIES	05/14/2010	096547	7,223.15
A T & T	2010 024-451-035	UTILITIES	36224545/APRIL 2010	05/14/2010	096700	47.57
A T & T LONG DISTANCE	2010 024-451-035	UTILITIES	250086/LD	05/14/2010	096701	2.71
APAC TEXAS, INC.	2010 024-451-032	ROAD MATERIAL	TY CD PCT4	05/14/2010	096707	1,109.55
BROOKSIDE EQUIP SALES	2010 024-451-028	MACHINERY MAINTENANCE	TY CD PCT4	05/14/2010	096715	227.08
CINTAS CORPORATION #084	2010 024-451-044	UNIFORMS	01423/PCT4	05/14/2010	096721	43.75
CINTAS CORPORATION #084	2010 024-451-044	UNIFORMS	01423/PCT4	05/14/2010	096721	43.75
CINTAS CORPORATION #084	2010 024-451-044	UNIFORMS	01423/PCT4	05/14/2010	096721	81.75
CINTAS CORPORATION #084	2010 024-451-044	UNIFORMS	01423/PCT4	05/14/2010	096721	43.75
ELLIS TRUCK	2010 024-451-028	MACHINERY MAINTENANCE	TY CD PCT4	05/14/2010	096739	14.50
GARDNER OIL, INC.	2010 024-451-029	GAS, OIL, GREASE	TYCD PCT4	05/14/2010	096745	93.50
GARDNER OIL, INC.	2010 024-451-029	GAS, OIL, GREASE	TYCD PCT4	05/14/2010	096745	3,302.29
GARDNER OIL, INC.	2010 024-451-029	GAS, OIL, GREASE	TYCD PCT4	05/14/2010	096745	345.75
GARDNER OIL, INC.	2010 024-451-029	GAS, OIL, GREASE	TYCD PCT4	05/14/2010	096745	2,463.26
GEMPLER'S	2010 024-451-028	MACHINERY MAINTENANCE	TY CD PCT4	05/14/2010	096746	447.70
HOLLIS TIRE CO.	2010 024-451-030	TIRES, TUBES	150.00-LABDR/PCT4	05/14/2010	096753	150.00
ROARK, A. W., JR.	2010 024-451-032	ROAD MATERIAL	REMOVAL IRON ORE/PCT.4	05/14/2010	096811	459.00
ROARK, DAVID	2010 024-451-032	ROAD MATERIAL	REMOVAL IRON ORE/PCT.4	05/14/2010	096812	459.00
STORY-WRIGHT	2010 024-451-040	MISCELLANEOUS SUPPLIES	105140/PCT.4	05/14/2010	096824	19.49
TIMBERMANS SUPPLY	2010 024-451-028	MACHINERY MAINTENANCE	12026/PCT.4	05/14/2010	096837	52.11
TYLER COUNTY AUTO PARTS	2010 024-451-028	MACHINERY MAINTENANCE	874/PCT.4	05/14/2010	096842	15.58
TYLER COUNTY PCT III	2010 024-496-023	TRANSFER TO R&B, PCT 3	MTHLY.TRANS. MAY 2010	05/14/2010	096847	1,473.25
WAL-MART COMMUNITY/SEMB	2010 024-451-040	MISCELLANEOUS SUPPLIES	00201591/PCT4	05/14/2010	096853	19.86

TOTAL CHECKS WRITTEN	20,455.03
TOTAL VOID CHECKS	0.00
TOTAL CHECK AMOUNT	20,455.03

TYLER CO AIRPORT
ALL CHECKS

VENDOR NAME	ACCOUNT #	ACCOUNT NAME	ITEM/REASON	DATE	CHECK	AMOUNT
METAL DEPOT	2010 025-451-028	REPAIRS & MAINTENANCE	TY CO AIRPORT	05/14/2010	096785	154.60
PARKER LUMBER	2010 025-451-028	REPAIRS & MAINTENANCE	TY CO AIRPORT	05/14/2010	096796	1,588.15
PARKER LUMBER	2010 025-451-028	REPAIRS & MAINTENANCE	TY CO AIRPORT	05/14/2010	096796	195.60
PARKER LUMBER	2010 025-451-028	REPAIRS & MAINTENANCE	TY CO AIRPORT	05/14/2010	096796	34.50
PARKER LUMBER	2010 025-451-028	REPAIRS & MAINTENANCE	TY CO AIRPORT	05/14/2010	096796	65.80
PARKER LUMBER	2010 025-451-028	REPAIRS & MAINTENANCE	TY CO AIRPORT	05/14/2010	096796	44.72
SULLIVANS HARDWARE	2010 025-451-028	REPAIRS & MAINTENANCE	AIRPORT/PCTS	05/14/2010	096825	26.95
TOTAL CHECKS WRITTEN						2,110.36
TOTAL VOID CHECKS						0.00
TOTAL CHECK AMOUNT						2,110.36

TYLER CO. RODEO ARENA/FAIRGRND
ALL CHECKS

VENDOR NAME	ACCOUNT #	ACCOUNT NAME	ITEM/REASON	DATE	CHECK	AMOUNT
A-1 JOHNNY PORTABLE TOILET	2010 026-451-028	REPAIRS & MAINTENANCE	TY CD RODEO	05/14/2010	096702	170.00
FARKER LUMBER	2010 026-451-028	REPAIRS & MAINTENANCE	22705/RODED	05/14/2010	096796	117.36
TOLARS FEED AND OUTDOOR SU	2010 026-451-028	REPAIRS & MAINTENANCE	TY CD RODEO	05/14/2010	096838	69.90
TYCO GENERAL FEED & RANCH	2010 026-451-028	REPAIRS & MAINTENANCE	TY CD RODEO	05/14/2010	096840	110.00

TOTAL CHECKS WRITTEN						467.26
TOTAL VOID CHECKS						0.00

TOTAL CHECK AMOUNT						467.26

COUNTY CLERK RMP
ALL CHECKS

VENDOR NAME	ACCOUNT #	ACCOUNT NAME	ITEM/REASON	DATE	CHECK	AMOUNT
FICA	2010 031-202-100	SALARIES PAYABLE	FICA TAXES	05/14/2010	096537	30.61
FICA	2010 031-451-002	SOCIAL SECURITY-ARCHIVE	FICA TAXES	05/14/2010	096537	30.61
MEDICARE - ELECTRONIC TRAN	2010 031-202-100	SALARIES PAYABLE	MEDICARE TAXES	05/14/2010	096546	7.16
MEDICARE - ELECTRONIC TRAN	2010 031-451-002	SOCIAL SECURITY-ARCHIVE	MEDICARE TAXES	05/14/2010	096546	7.16
NET SALARIES	2010 031-202-100	SALARIES PAYABLE	NET SALARIES	05/14/2010	096547	330.98
NET DATA CORP.	2010 031-452-041	MISC. EXPENSE-RMP	TYL900057/DOCLK	05/14/2010	096790	225.00
TOTAL CHECKS WRITTEN						681.52
TOTAL VOID CHECKS						0.00
TOTAL CHECK AMOUNT						681.52

C D A FORFEITURE
ALL CHECKS

VENDOR NAME	ACCOUNT #	ACCOUNT NAME	ITEM/REASON	DATE	CHECK	AMOUNT
LAKWAY TIRE & SERVICE	2010 032-492-005	MISC. EXPENSES	289.90 LABOR/CDA	05/14/2010	09677E	289.17

TOTAL CHECKS WRITTEN						289.17
TOTAL VOID CHECKS						0.00

TOTAL CHECK AMOUNT						289.17

SHERIFF FORFEITURE
ALL CHECKS

VENDOR NAME	ACCOUNT #	ACCOUNT NAME	ITEN/REASON	DATE	CHECK	AMOUNT
NALCOM WIRELESS COMMUNICAT	2010 033-453-045	EQUIPMENT	100.00 LABOR/TCSO	05/14/2010	096789	3,584.05
NALCOM WIRELESS COMMUNICAT	2010 033-453-045	EQUIPMENT	31554/TCSO	05/14/2010	096789	15.00
TOTAL CHECKS WRITTEN						3,599.05
TOTAL VOID CHECKS						0.00
TOTAL CHECK AMOUNT						3,599.05

TEMPLE FOUND/ARE YOU O K GRANT
ALL CHECKS

VENDOR NAME	ACCOUNT #	ACCOUNT NAME	ITEM/REASON	DATE	CHECK	AMOUNT
DELL MARKETING L. P.	2010 035-451-035	UTILITIES AND EQUIPMENT	00678522/TC80	05/14/2010	096731	1,417.61

TOTAL CHECKS WRITTEN						1,417.61
TOTAL VOID CHECKS						0.00

TOTAL CHECK AMOUNT						1,417.61

LIBRARY FUND
ALL CHECKS

B

VENDOR NAME	ACCOUNT #	ACCOUNT NAME	ITEM/REASON	DATE	CHECK	AMOUNT
LEXIS NEXIS	2010 036-492-050	LIBRARY BOOKS & SUPPLIES	1134N6/CDA	05/14/2010	096776	77.00
LEXIS NEXIS	2010 036-492-050	LIBRARY BOOKS & SUPPLIES	1396TR/DSJUD	05/14/2010	096776	40.00
WEST GROUP	2010 036-492-050	LIBRARY BOOKS & SUPPLIES	1000705398/CDA	05/14/2010	096857	409.71
WEST GROUP	2010 036-492-050	LIBRARY BOOKS & SUPPLIES	1000705398/CDA	05/14/2010	096857	85.25
WEST GROUP	2010 036-492-050	LIBRARY BOOKS & SUPPLIES	1000682354/COJUD	05/14/2010	096857	124.75
WEST GROUP	2010 036-492-050	LIBRARY BOOKS & SUPPLIES	1000643695/COJUD	05/14/2010	096857	204.00
WEST GROUP	2010 036-492-050	LIBRARY BOOKS & SUPPLIES	1000640613/JF3	05/14/2010	096857	169.00
TOTAL CHECKS WRITTEN						1,109.71
TOTAL VOID CHECKS						0.00
TOTAL CHECK AMOUNT						1,109.71

T C COLLECTION CENTER
ALL CHECKS

VENDOR NAME	ACCOUNT #	ACCOUNT NAME	ITEM/REASON	DATE	CHECK	AMOUNT
FICA	2010 037-202-100	SALARIES PAYABLE	FICA TAXES	05/14/2010	096537	159.75
FICA	2010 037-446-002	SOCIAL SECURITY	FICA TAXES	05/14/2010	096537	159.75
FIT	2010 037-202-100	SALARIES PAYABLE	FIT TAXES	05/14/2010	096538	117.15
MEDICARE - ELECTRONIC TRAN	2010 037-202-100	SALARIES PAYABLE	MEDICARE TAXES	05/14/2010	096546	37.37
MEDICARE - ELECTRONIC TRAN	2010 037-446-002	SOCIAL SECURITY	MEDICARE TAXES	05/14/2010	096546	37.37
NET SALARIES	2010 037-202-100	SALARIES PAYABLE	NET SALARIES	05/14/2010	096547	2,179.32
A T & T	2010 037-451-035	UTILITIES	36524345/APRIL 2010	05/14/2010	096700	31.74
GARDNER OIL, INC.	2010 037-451-029	GAS, OIL, GREASE	TYCO COLLECTION	05/14/2010	096745	1,216.88
IESI HARDIN CD LANDFILL	2010 037-451-043	CONTAINER HAULS	052032696/COLL CTR	05/14/2010	096756	2,416.00
IESI HARDIN CD LANDFILL	2010 037-451-043	CONTAINER HAULS	052032696/COLL CTR	05/14/2010	096756	2,730.00
SULLIVANS HARDWARE	2010 037-451-028	MACHINERY MAINTENANCE	105698/COLL.CTR.	05/14/2010	096825	42.77
SULLIVANS HARDWARE	2010 037-451-028	MACHINERY MAINTENANCE	106045/COLL.CTR.	05/14/2010	096825	1.29
SULLIVANS HARDWARE	2010 037-451-028	MACHINERY MAINTENANCE	106199/COLL.CTR.	05/14/2010	096825	12.75
TELSTAR SPECIALTY PRODUCTS	2010 037-451-028	MACHINERY MAINTENANCE	6355/COLL.CTR.	05/14/2010	096831	84.15
TIMBERMANS SUPPLY	2010 037-451-028	MACHINERY MAINTENANCE	TY CO COLL CTR.	05/14/2010	096837	10.50
WASTE MANAGEMENT	2010 037-451-043	CONTAINER HAULS	126-0000611-1126-6/COLL.	05/14/2010	096855	221.49
TOTAL CHECKS WRITTEN						9,494.75
TOTAL VOID CHECKS						0.00
TOTAL CHECK AMOUNT						9,494.75

COURTHOUSE SECURITY
ALL CHECKS

VENDOR NAME	ACCOUNT #	ACCOUNT NAME	ITEM/REASON	DATE	CHECK	AMOUNT
A T & T	2010 044-451-035	UTILITIES	36524545/APRIL 2010	05/14/2010	096700	31.74

TOTAL CHECKS WRITTEN						31.74
TOTAL VOID CHECKS						0.00

TOTAL CHECK AMOUNT						31.74

C D A FEES
ALL CHECKS

VENDOR NAME	ACCOUNT #	ACCOUNT NAME	ITEM/REASON	DATE	CHECK	AMOUNT
AMERICAN ASSOCIATION OF NO	2010 050-492-005	MISCELLANEOUS	NOTARY/BROOM, DANA	05/14/2010	096705	65.94
CLERK, SUPREME COURT	2010 050-492-005	MISCELLANEOUS	RENEWAL FEES/CDAQ	05/14/2010	096723	235.00
CLERK, SUPREME COURT	2010 050-492-005	MISCELLANEOUS	RENEWAL FEES/CAD	05/14/2010	096723	245.00
INNOVATIVE LEASING	2010 050-492-005	MISCELLANEOUS	001-0077472-001/CDA	05/14/2010	096758	165.00
INNOVATIVE LEASING	2010 050-492-005	MISCELLANEOUS	001-0077472-001/CDA	05/14/2010	096758	165.00
TDCAA NOW TRUST FUND	2010 050-492-005	MISCELLANEOUS	MEMB./SMITH, JOE	05/14/2010	096829	75.00
TDCAA NOW TRUST FUND	2010 050-492-005	MISCELLANEOUS	MEMB./STIBBS, PAULA	05/14/2010	096829	50.00
TDCAA NOW TRUST FUND	2010 050-492-005	MISCELLANEOUS	MEMB./GIUSTINIANO, TOBIE	05/14/2010	096829	50.00
TDCAA NOW TRUST FUND	2010 050-492-005	MISCELLANEOUS	MEMB./CLOY, LOU ANN	05/14/2010	096829	50.00
TYLER COUNTY	2010 050-492-005	MISCELLANEOUS	FLEET INS./CDA	05/14/2010	096841	266.00
U PUMP IT	2010 050-492-005	MISCELLANEOUS	UP CRINDIS UP/CDA	05/14/2010	096850	187.15
WAL-MART COMMUNITY/6EMB	2010 050-492-005	MISCELLANEOUS	0428/CDA	05/14/2010	096853	58.75
TOTAL CHECKS WRITTEN						1,642.88
TOTAL VOID CHECKS						0.00
TOTAL CHECK AMOUNT						1,642.88

ALTERNATE DISPUTE RESOLUTION
ALL CHECKS

VENDOR NAME	ACCOUNT #	ACCOUNT NAME	ITEM/REASON	DATE	CHECK	AMOUNT
RJMFSC	2010 052-451-022	PROFESSIONAL SERVICES	MTHLY.TRANS. MAY 2010	05/14/2010	096810	765.05

						TOTAL CHECKS WRITTEN 765.05
						TOTAL VOID CHECKS 0.00

						TOTAL CHECK AMOUNT 765.05

ADULT PROBATION
ALL CHECKS

VENDOR NAME	ACCOUNT #	ACCOUNT NAME	ITEM/REASON	DATE	CHECK	AMOUNT
FICA	2010 053-202-100	SALARIES PAYABLE	FICA TAXES	05/14/2010	096537	642.49
FICA	2010 053-451-002	SOCIAL SECURITY	FICA TAXES	05/14/2010	096537	642.49
FIT	2010 053-202-100	SALARIES PAYABLE	FIT TAXES	05/14/2010	096538	833.29
MEDICARE - ELECTRONIC TRAN	2010 053-202-100	SALARIES PAYABLE	MEDICARE TAXES	05/14/2010	096546	150.26
MEDICARE - ELECTRONIC TRAN	2010 053-451-002	SOCIAL SECURITY	MEDICARE TAXES	05/14/2010	096546	150.26
NET SALARIES	2010 053-202-100	SALARIES PAYABLE	NET SALARIES	05/14/2010	096547	7,945.32
TYLER COUNTY	2010 053-437-014	CCP CONTRACT SERV FOR OFFE	MAY 2010	05/14/2010	096696	2,000.00
A T & T LONG DISTANCE	2010 053-451-009	UTILITIES	250086/LD	05/14/2010	096701	17.98
AMERICAN EXPRESS	2010 053-451-007	SUPPLIES & OPERATING EXPEN	X8-22001/CSCD	05/14/2010	096706	43.98
CORRECTIONS SOFTWARE SOLUT	2010 053-451-016	PROFESSIONAL FEES	JUNE 2010/CSCD	05/14/2010	096727	995.00
DE LAKE LANDEN PUBLIC FINA	2010 053-451-007	SUPPLIES & OPERATING EXPEN	270597/CSCD	05/14/2010	096730	165.50
FATTILLO BROWN & HILL LLP	2010 053-451-016	PROFESSIONAL FEES	12752/CSCD	05/14/2010	096797	1,600.00
QUILL CORPORATION	2010 053-451-007	SUPPLIES & OPERATING EXPEN	02772734/CSCD	05/14/2010	096806	53.57
QUILL CORPORATION	2010 053-451-007	SUPPLIES & OPERATING EXPEN	02772734/CSCD	05/14/2010	096806	175.04
REDWOOD BIOTECH	2010 053-451-007	SUPPLIES & OPERATING EXPEN	LIST/CSCD	05/14/2010	096808	230.44
TOTAL CHECKS WRITTEN						15,586.04
TOTAL VOID CHECKS						0.00
TOTAL CHECK AMOUNT						15,586.04

JUVENILE PROBATION
ALL CHECKS

VENDOR NAME	ACCOUNT #	ACCOUNT NAME	ITEM/REASON	DATE	CHECK	AMOUNT
FICA	2010 054-202-100	SALARIES PAYABLE	FICA TAXES	05/14/2010	096537	315.62
FICA	2010 054-437-002	SOCIAL SECURITY-CCP	FICA TAXES	05/14/2010	096537	111.35
FICA	2010 054-451-002	SOCIAL SECURITY-REG SUP	FICA TAXES	05/14/2010	096537	204.27
FIT	2010 054-202-100	SALARIES PAYABLE	FIT TAXES	05/14/2010	096538	492.13
MEDICARE - ELECTRONIC TRAN	2010 054-202-100	SALARIES PAYABLE	MEDICARE TAXES	05/14/2010	096546	73.82
MEDICARE - ELECTRONIC TRAN	2010 054-437-002	SOCIAL SECURITY-CCP	MEDICARE TAXES	05/14/2010	096546	26.04
MEDICARE - ELECTRONIC TRAN	2010 054-451-002	SOCIAL SECURITY-REG SUP	MEDICARE TAXES	05/14/2010	096546	47.78
NET SALARIES	2010 054-202-100	SALARIES PAYABLE	NET SALARIES	05/14/2010	096547	3,520.77
A T & T LONG DISTANCE	2010 054-437-009	TELEPHONE	250086/LD	05/14/2010	096701	18.73
HAYS COUNTY TREASURER	2010 054-453-010	NONSECURE PLACEMENTS	MARCH 2010/PLACEMENT	05/14/2010	096751	1,800.00
HAYS COUNTY TREASURER	2010 054-453-010	NONSECURE PLACEMENTS	APRIL 2010/PLACEMENT	05/14/2010	096751	2,700.00
JUVENILE LAW SECTION	2010 054-437-011	TRAINING & EDUCATION-CCP	REGIS. FEE/JUPRC	05/14/2010	096767	200.00
OFFICE DEPOT	2010 054-437-007	OFFICE SUPPLIES-COMMUNITY	62262633/JUPRC	05/14/2010	096794	29.96
OFFICE DEPOT	2010 054-437-007	OFFICE SUPPLIES-COMMUNITY	62262633/JUPRC	05/14/2010	096794	20.98
TOTAL CHECKS WRITTEN						9,561.45
TOTAL VOID CHECKS						0.00
TOTAL CHECK AMOUNT						9,561.45

EMERGENCY OPERATIONS CENTER
ALL CHECKS

VENDOR NAME	ACCOUNT #	ACCOUNT NAME	ITEM/REASON	DATE	CHECK	AMOUNT
FICA	2010 076-202-100	SALARIES PAYABLE	FICA TAXES	05/14/2010	096537	169.96
FICA	2010 076-448-002	SOCIAL SECURITY	FICA TAXES	05/14/2010	096537	169.96
FIT	2010 076-202-100	SALARIES PAYABLE	FIT TAXES	05/14/2010	096538	129.91
MEDICARE - ELECTRONIC TRAN	2010 076-202-100	SALARIES PAYABLE	MEDICARE TAXES	05/14/2010	096546	39.75
MEDICARE - ELECTRONIC TRAN	2010 076-448-002	SOCIAL SECURITY	MEDICARE TAXES	05/14/2010	096546	39.75
NET SALARIES	2010 076-202-100	SALARIES PAYABLE	NET SALARIES	05/14/2010	096547	2,334.05
A T & T	2010 076-451-009	TELEPHONE	36524345/APRIL 2010	05/14/2010	096700	189.70
A T & T LONG DISTANCE	2010 076-451-009	TELEPHONE	250086/LD	05/14/2010	096701	6.90
INDOFF OFFICE SUPPLIES	2010 076-451-007	OFFICE SUPPLIES	183922/EOC	05/14/2010	096757	31.57
INDOFF OFFICE SUPPLIES	2010 076-451-007	OFFICE SUPPLIES	186597/VET	05/14/2010	096757	27.91
INDOFF OFFICE SUPPLIES	2010 076-451-007	OFFICE SUPPLIES	183922/EOC	05/14/2010	096757	331.86
SULLIVANS HARDWARE	2010 076-451-007	OFFICE SUPPLIES	KEYS/EOC	05/14/2010	096825	2.55
TIMBERMANS SUPPLY	2010 076-451-028	VEHICLE OPERATIONS/MAINTEN	12029/EOC	05/14/2010	096837	62.95
TYLER COUNTY AUTO PARTS	2010 076-451-028	VEHICLE OPERATIONS/MAINTEN	874/EOC	05/14/2010	096842	16.26
TYLER COUNTY AUTO PARTS	2010 076-459-045	STANDBY MAINTENANCE	874/EOC	05/14/2010	096842	17.83
U PUMP IT	2010 076-451-028	VEHICLE OPERATIONS/MAINTEN	UP T100 EMER MBTE/EOC	05/14/2010	096850	116.90
TOTAL CHECKS WRITTEN						3,582.89
TOTAL VOID CHECKS						0.00
TOTAL CHECK AMOUNT						3,582.89

TJPC-TITLE IVE FUND
ALL CHECKS

VENDOR NAME	ACCOUNT #	ACCOUNT NAME	ITEM/REASON	DATE	CHECK	AMOUNT
HAYS COUNTY TREASURER	2010 088-451-015	RESIDENTIAL SERVICES	MARCH 2010# 1273	05/14/2010	096751	200.00
HAYS COUNTY TREASURER	2010 088-451-015	RESIDENTIAL SERVICES	APRIL 2010 #1273	05/14/2010	096751	300.00
JUSTICE BENEFITS, INC.	2010 088-451-045	ADMINISTRATIVE FEES	A6UJ9A000246/JUPRO	05/14/2010	096766	48.93

TOTAL CHECKS WRITTEN						548.93
TOTAL VOID CHECKS						0.00

TOTAL CHECK AMOUNT						548.93

TYLER COUNTY NUTRITION CENTER
ALL CHECKS

VENDOR NAME	ACCOUNT #	ACCOUNT NAME	ITEM/REASON	DATE	CHECK	AMOUNT
DIRECTV COMMERCIAL	2010 089-451-035	UTILITIES	TY CO NUTRITION CTR	05/14/2010	098733	89.99
ENTERGY	2010 089-451-035	UTILITIES	451093/SHELTER W/SHOP	05/14/2010	098740	507.28
ENTERGY	2010 089-451-035	UTILITIES	451094/NUTR. CTR.	05/14/2010	098740	649.73
TOTAL CHECKS WRITTEN						1,241.00
TOTAL VOID CHECKS						0.00
TOTAL CHECK AMOUNT						1,241.00

STATE- APPELLATE JUDICIAL FUND
ALL CHECKS

VENDOR NAME	ACCOUNT #	ACCOUNT NAME	ITEM/REASON	DATE	CHECK	AMOUNT
NINTH COURT OF APPEALS	2010 095-492-083	PAYMENTS TO STATE	COCLK/DSCLK/SB-325 CH. 2	05/14/2010	096791	250.00

						TOTAL CHECKS WRITTEN 250.00
						TOTAL VOID CHECKS 0.00

						TOTAL CHECK AMOUNT 250.00

TYLER COUNTY JUSTICE GRANT
ALL CHECKS

VENDOR NAME	ACCOUNT #	ACCOUNT NAME	ITEM/REASON	DATE	CHECK	AMOUNT
DELL MARKETING L. P.	2010 099-451-007	COMPUTERS, ETC - JUVENILE	006789522/COURTHOUSE	05/14/2010	096731	3,727.56
DELL MARKETING L. P.	2010 099-451-007	COMPUTERS, ETC - JUVENILE	006789522/COURTHOUSE	05/14/2010	096731	269.00

TOTAL CHECKS WRITTEN						3,996.56
TOTAL VOID CHECKS						0.00

TOTAL CHECK AMOUNT						3,996.56

PERMIT TO USE COUNTY ROAD RIGHTS-OF-WAY
FOR CONSTRUCTION OF GAS PIPELINE

RiverBend Midstream Partners, LP whose principal address is **1990 Post Oak Blvd., Suite 2400, Houston, TX 77056**, hereinafter referred to as **RiverBend Midstream** does hereby apply for a permit to utilize the rights of way of **Tyler County Road 4445** as hereinafter provided:

I.

RiverBend Midstream is the transporter of certain quantities of natural gas to be produced by: **Gas wells** situated **in multiple locations**, Tyler & Jasper Counties, Texas.

II.

RiverBend Midstream will construct, operate and maintain 2 pipelines not greater than **12** inches in diameter, to cause the gas produced from the **Tyler County and other wells**, located **in multiple** locations, in Tyler & Jasper Counties, Texas. Said pipelines will cross **County Road 4445** approximately **76** feet north of **FM Road 1013**.

III.

RiverBend Midstream will construct, operate and maintain the gathering lines in a good and workmanlike manner, in compliance with the highest standards of pipeline construction and in accordance with all applicable laws and regulations.

IV.

RiverBend Midstream will construct pipelines across county right of way on **County Road 4445** and as nearly as practicable across to a depth so as not interfere with the continued maintenance of **County Road 4445**, which is a minimum to be six (6) feet below the county road surface. **RiverBend Midstream** will restore the surface to the same condition, or better, as it was prior to **direction drill** construction of the gathering lines.

V.

RiverBend Midstream understands and agrees that its use of the rights of way on **County Road 4445** shall be limited exclusively to the purpose designated herein and should Tyler County reasonably determine that the pipelines need to be moved or present an undue threat to the public safety, **RiverBend Midstream** will remove and relocate the gathering lines at its sole cost and expense upon thirty (30) days written notification by Tyler County.

VI.

COPY

RiverBend Midstream and its successors and designees hereby indemnify and agree to hold Tyler County, its officials and affiliated agencies harmless from any and all claims of personal injury (including death), damage to equipment, supplies or personal property or any other claims which may arise by virtue of **lateral** use of the rights of way for the construction, operation and maintenance of the gathering lines by **RiverBend Midstream**. **RiverBend Midstream** shall provide Tyler County with a certificate of liability insurance in the amount of \$1,000,000.00 showing Tyler County as an additional named insured under the policy at least seven (7) days before construction begins, and such policy is to remain in force while said pipelines are in use.

VII.

Tyler County makes no warranty of title or representation of right of use. Any suit filed by any adjacent land owner shall be defended by **RiverBend Midstream**, and Tyler County shall not be liable or responsible for defending any suit or title to such easement or right of way.

VIII.

RiverBend Midstream shall provide and post gas line marking and/or signs on **County Road 4445** and will maintain the up keep of such signs.

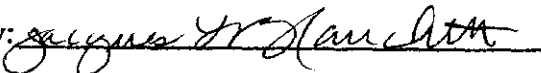
By execution hereof in the spaces provided below, **RiverBend Midstream** does hereby apply for a permit as hereinafter provided, and Tyler County does hereby grant a permit to **RiverBend Midstream** under the premises and under the conditions as hereinabove provided to be effective as of the signature on behalf of the County.

Dated this 7th day of May 2010.

12" Gathering Line (name of pipeline)

By:  (executor)

PERMIT GRANTED ON BEHALF OF TYLER COUNTY, TEXAS

By: 

Name: Jacques L. Blanchette

Title: County Judge

Date: 5-14-10

PRO PLUS, INC.

11150 S. Wilcrest Drive
Suite 101
Houston, Texas 77099

(281) 568-9200
Fax:(281) 568-9998
E-mail: proplus@proplusinc.com

May 6, 2010

RE: MAOP Calculations - 12" Natural Gas Pipeline

The following information is provided to document the design of the 12" Natural Gas pipeline for road crossings in Tyler and Jasper Counties, Texas for RiverBend Midstream Partners, LP:

Design Criteria

Line Pipe: 12.750" O.D., 0.312" W.T., Grade 5LX-60, ERW, coated with 14-16 mils FBE and 30 mils ARO.

Code: Title 49, Code of Federal Regulations, Part 192, "Transportation of Natural and Other Gas by Pipeline: Minimum Federal Safety Standards".

Calculations for Maximum Allowable Operating Pressure (Reference 192.105)

$P = (2 S t / D) \times E \times F$ where, P = Internal design pressure, psi
S = Yield strength of pipe, psi (Grade 5LX-60=60,000 psi)
t = Nominal wall thickness of pipe, inches (0.312")
D = Nominal outside diameter of pipe, inches (12.750")
E = Seam joint factor (1.0 for ERW pipe)
F = design factor (0.50 for road crossings in Class 2 locations)
 $P = (2 \times 60,000 \times 0.312 / 12.750) \times 1.0 \times 0.50$
P = 1,468 psi

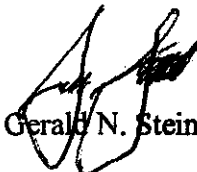
Note:

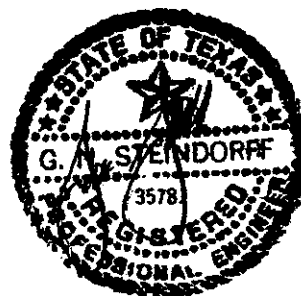
Maximum Allowable Operating Pressure limited to 1411 psi by other sections of the pipeline.

Other Requirements

The pipeline must be hydrostatically tested to a minimum pressure of 1.25 x MAOP or 1.25 x 1,411 psi = 1,764 psi in accordance with 49 CFR 192, Subpart J, and the design pressure of any other component of the pipeline must be at least 1,411 psi (fittings shall be the same specification as the line pipe and valves and flanges shall be ANSI 600).

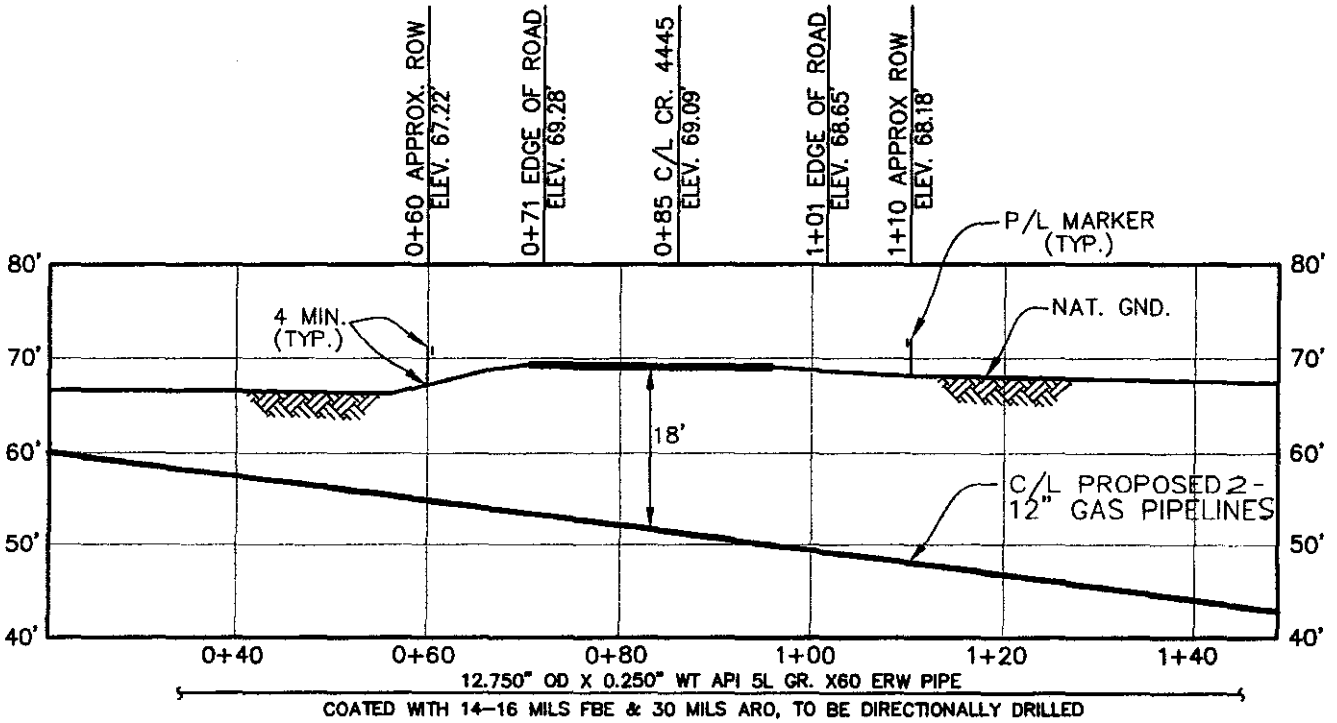
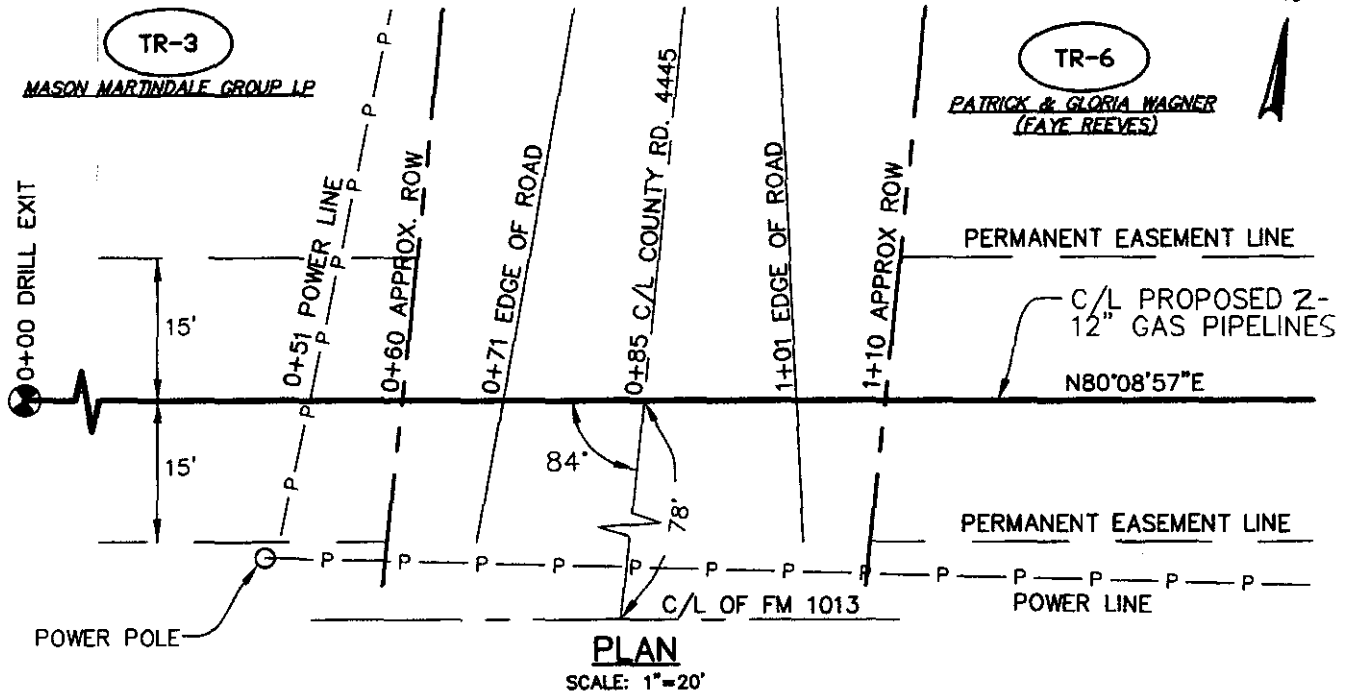
Sincerely,


Gerald N. Steindorff, P.E.



TYLER COUNTY, TEXAS

EPHRAIM THOMPSON SURVEY, A-34



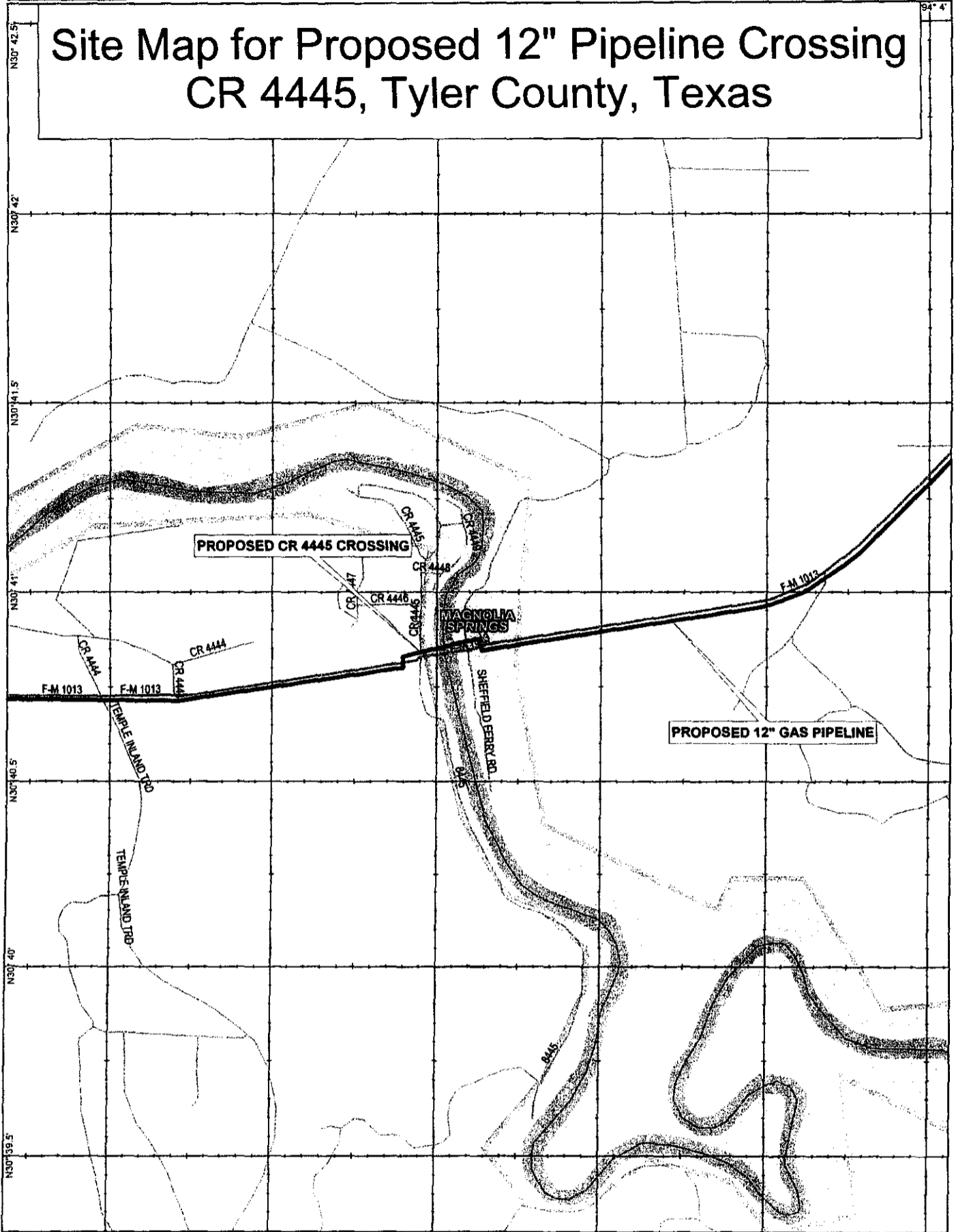
BENCHMARK: FOUND CONC. MON.
27.6' RT. @ STATION 2+96
APPROX. EL. 68.58'

PLOTTED BY: JS DATE: 05/07/10 TIME: 9:45AM

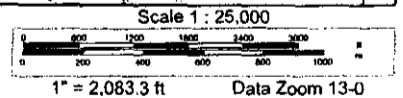
REVISION			Pro Plus, Inc. FULL SERVICE ENGINEERING <i>Since 1987</i>	SCALE AS SHOWN		RiverBend Midstream Partners, LP
NO	DATE	DESCRIPTION		DRAWN	DATE	
A	05/07/10	ISSUED FOR REVIEW	JS	05/07/10	PROPOSED 12' GAS PIPELINES CROSSING COUNTY ROAD 4445 TYLER COUNTY, TEXAS	
			CA	05/07/10		
			APPROVED	DATE	TITLE PROPOSED 12' GAS PIPELINES CROSSING COUNTY ROAD 4445 TYLER COUNTY, TEXAS	
			GNS	05/07/10		
			PRO PLUS JOB NO.	1041	ND A10412101	
			AFE/P.D.M.			
			CLIENT FILE NO.		REV. A	
			PRO PLUS FILE NO.	A10412101		
			TBPE REGISTRATION NO. F-0990			

FILE PATH: A10412101_

Site Map for Proposed 12" Pipeline Crossing CR 4445, Tyler County, Texas



Data use subject to license.
 © 2004 DeLorme. XMap® 4.5.
 www.delorme.com



ACORD CERTIFICATE OF LIABILITY INSURANCE

OP ID KM
RIVER-4

DATE (MM/DD/YYYY)
05/07/10

PRODUCER J&H Insurance Services, Inc. 510 N. Valley Mills Dr., #701 Waco TX 76710 Phone: 254-772-6074 Fax: 254-772-6864		THIS CERTIFICATE IS ISSUED AS A MATTER OF INFORMATION ONLY AND CONFERS NO RIGHTS UPON THE CERTIFICATE HOLDER. THIS CERTIFICATE DOES NOT AMEND, EXTEND OR ALTER THE COVERAGE AFFORDED BY THE POLICIES BELOW.	
INSURED RiverBend Midstream Partners LP RiverBend Midstream Partners GP LLC 1990 Post Oak Blvd, Suite 2400 Houston TX 77056		INSURERS AFFORDING COVERAGE	NAIC #
		INSURER A: St. Paul Surplus Line Ins. Co.	
		INSURER B:	
		INSURER C:	
		INSURER D:	
		INSURER E:	

COVERAGES

THE POLICIES OF INSURANCE LISTED BELOW HAVE BEEN ISSUED TO THE INSURED NAMED ABOVE FOR THE POLICY PERIOD INDICATED. NOTWITHSTANDING ANY REQUIREMENT, TERM OR CONDITION OF ANY CONTRACT OR OTHER DOCUMENT WITH RESPECT TO WHICH THIS CERTIFICATE MAY BE ISSUED OR MAY PERTAIN, THE INSURANCE AFFORDED BY THE POLICIES DESCRIBED HEREIN IS SUBJECT TO ALL THE TERMS, EXCLUSIONS AND CONDITIONS OF SUCH POLICIES. AGGREGATE LIMITS SHOWN MAY HAVE BEEN REDUCED BY PAID CLAIMS.

INSR	ADD'L LTR	INSRD	TYPE OF INSURANCE	POLICY NUMBER	POLICY EFFECTIVE DATE (MM/DD/YY)	POLICY EXPIRATION DATE (MM/DD/YY)	LIMITS
A			GENERAL LIABILITY	MU05541044	04/16/10	04/16/11	EACH OCCURRENCE \$ 1,000,000
			<input checked="" type="checkbox"/> COMMERCIAL GENERAL LIABILITY				DAMAGE TO RENTED PREMISES (Ea occurrence) \$ 50,000
			<input type="checkbox"/> CLAIMS MADE <input checked="" type="checkbox"/> OCCUR				MED EXP (Any one person) \$ 5,000
			GEN'L AGGREGATE LIMIT APPLIES PER				PERSONAL & ADV INJURY \$ 1,000,000
		<input checked="" type="checkbox"/> POLICY <input type="checkbox"/> PRO-JECT <input type="checkbox"/> LOC	GENERAL AGGREGATE \$ 2,000,000			PRODUCTS - COMP/OP AGG \$ 2,000,000	
A			AUTOMOBILE LIABILITY	MU05541044	04/16/10	04/16/11	COMBINED SINGLE LIMIT (Ea accident) \$ 1,000,000
			<input type="checkbox"/> ANY AUTO				BODILY INJURY (Per person) \$
			<input type="checkbox"/> ALL OWNED AUTOS				BODILY INJURY (Per accident) \$
			<input type="checkbox"/> SCHEDULED AUTOS				PROPERTY DAMAGE (Per accident) \$
<input checked="" type="checkbox"/> HIRED AUTOS							
<input checked="" type="checkbox"/> NON-OWNED AUTOS							
			GARAGE LIABILITY				AUTO ONLY - EA ACCIDENT \$
			<input type="checkbox"/> ANY AUTO				OTHER THAN EA ACC \$
							AUTO ONLY: AGG \$
A			EXCESS/UMBRELLA LIABILITY	MU05578051	04/16/10	04/16/11	EACH OCCURRENCE \$ 1,000,000
			<input type="checkbox"/> OCCUR <input type="checkbox"/> CLAIMS MADE				AGGREGATE \$ 1,000,000
			<input type="checkbox"/> DEDUCTIBLE				
			<input checked="" type="checkbox"/> RETENTION \$ 10,000				
			WORKERS COMPENSATION AND EMPLOYERS' LIABILITY				WC STATU-TORY LIMITS \$
			ANY PROPRIETOR/PARTNER/EXECUTIVE OFFICER/MEMBER EXCLUDED?				E L EACH ACCIDENT \$
			If yes, describe under SPECIAL PROVISIONS below				E L DISEASE - EA EMPLOYEE \$
			OTHER				E L DISEASE - POLICY LIMIT \$

DESCRIPTION OF OPERATIONS / LOCATIONS / VEHICLES / EXCLUSIONS ADDED BY ENDORSEMENT / SPECIAL PROVISIONS

CERTIFICATE HOLDER TYLER-4 Tyler County carl.arnold@proplusinc.com 300 West Bluff Woodville TX 75979	CANCELLATION SHOULD ANY OF THE ABOVE DESCRIBED POLICIES BE CANCELLED BEFORE THE EXPIRATION DATE THEREOF, THE ISSUING INSURER WILL ENDEAVOR TO MAIL 10 DAYS WRITTEN NOTICE TO THE CERTIFICATE HOLDER NAMED TO THE LEFT, BUT FAILURE TO DO SO SHALL IMPOSE NO OBLIGATION OR LIABILITY OF ANY KIND UPON THE INSURER, ITS AGENTS OR REPRESENTATIVES. AUTHORIZED REPRESENTATIVE Rowland Jackson
--	--

IMPORTANT

If the certificate holder is an ADDITIONAL INSURED, the policy(ies) must be endorsed. A statement on this certificate does not confer rights to the certificate holder in lieu of such endorsement(s).

If SUBROGATION IS WAIVED, subject to the terms and conditions of the policy, certain policies may require an endorsement. A statement on this certificate does not confer rights to the certificate holder in lieu of such endorsement(s).

DISCLAIMER

The Certificate of Insurance on the reverse side of this form does not constitute a contract between the issuing insurer(s), authorized representative or producer, and the certificate holder, nor does it affirmatively or negatively amend, extend or alter the coverage afforded by the policies listed thereon.

* DATE: 05/12/2010
PPYR: 05/2010 RN

TREASURER RECEIPT
TYLER COUNTY
STATE OF TEXAS

RECEIPT NO: 43591

900997
RECEIVED FROM: RIVER BEND MAINSTREAM PARTNERS
ADDRESS:
CITY/ST/ZIP:

ACCT NAME	ACCOUNT NO	ITEM DESCRIPTION	AMOUNT
ADMINISTRATIVE FEES	024-363-033	ROAD CROSSING PCT.4 TREAS ACCT	200.00



TREASURER OF TYLER COUNTY, TEXAS

RECEIPT TOTAL: 200.00

5/7/10 COPY COMMISSIONER

per JB

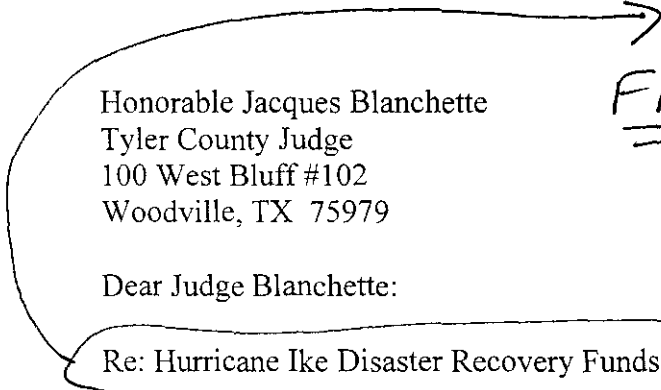


DEEP EAST TEXAS COUNCIL OF GOVERNMENTS & ECONOMIC DEVELOPMENT DISTRICT
Serving Angelina, Houston, Jasper, Nacogdoches, Newton, Polk,
Sabine, San Augustine, San Jacinto, Shelby, Trinity, Tyler counties

RECEIVED
MAY 06 2010
BY: [Signature]

May 5, 2010

Est. Legal fees
Tyler County's Contr.



Honorable Jacques Blanchette
Tyler County Judge
100 West Bluff #102
Woodville, TX 75979

FRI Agenda

Dear Judge Blanchette:

Re: Hurricane Ike Disaster Recovery Funds – Round II Allocation

During our monthly DETCOG board of directors meeting in April, the board voted unanimously to authorize DETCOG to engage two consultants who were represented by Congressman Jim Turner (Arnold & Porter) and his son, John Turner (Haynes Boone), for the explicit purpose of obtaining waivers of the LMI (low-moderate income) eligibility requirements for the use of Hurricane Disaster Recovery CDBG funds.

Over \$96 million has been slated for use by DETCOG counties and cities under the Round II allocation. These recourses appropriated by Congress may never be made available unless our local communities obtain waivers with regards to low-moderate income beneficiaries as defined by HUD.

In order to utilize these funds for priority projects identified by local officials and put the DETCOG region on a level playing field with the Lower Rio Grande Valley, (100 % of their COG region is considered low-to-moderate income eligible for CDBG funds) we are asking each community to join our efforts to raise funds to assist with the cost of this important endeavor.

I have attached a chart that reflects the current proposed allocation by city and county within the DETCOG region. It shows the percentage of estimated cost for the consultants that is the most equitable way to share the cost across the entire region based upon the current CDBG funding allocation.

Donnie Henson
President
Sabine River Authority

Lonnie Hunt
1st Vice President
Houston County Judge

Ben Bythewood
2nd Vice President
Mayor of Woodville

Royce Wells
3rd Vice President
San Jacinto Co
Commissioner

Charles Watson
Secretary
Sabine County Judge

Leroy Hughes
Treasurer
Mayor of San August

Jack Gorden
Immediate Past Presi
Mayor of Lufkin

Executive Director

Walter G. Diggles, Sr.
210 Premier Drive
Jasper, TX 75951
409-384-5704 phone
409-384-5390 fax
409-384-5975 tdd
www.detcog.org

Legal Counsel

Greg Longino
Attorney-at-Law
Lufkin, TX

Hurricane Ike Round II Allocation
May 5, 2010
Page 2

All funds are to be payable to and addressed to:
Deep East Texas County Commissioners & Judges Association
210 Premier Drive
Jasper, Texas 75951.

Categories for your consideration are as follows:

- a) Assessment for DETCOG Region Hurricane Ike Disaster Recovery Project
- b) Special Membership Assessment for DETCOG Region Hurricane Ike Disaster Recovery
- c) Special Hurricane Disaster Recovery Dues Assessment.

If you have any questions or comments regarding this matter, please contact me at 409-384-5704, ext. 257.

Sincerely,



Walter G. Diggles, Sr.
Executive Director

Attachment

Consultant/Legal Fee Allocation

* Estimated Consultant/Legal Fees \$ 100,000.00

	Total Population	% Total	
Angelina County	80130	100.00%	\$ 6,651.28
City Lufkin	32709	40.82%	\$ 2,715.05
City Diboll	5470	6.83%	\$ 454.04
City Burke	315	0.39%	\$ -
City Hudson	3792	4.73%	\$ 314.76
City Huntington	2068	2.58%	\$ 171.66
City Zavalla	647	0.81%	\$ -
Unincorporated-to County	35129	43.84%	\$ 2,995.77
	<u>80130</u>	<u>100.00%</u>	<u>\$ 6,651.28</u>
Houston County	23185	100.00%	\$ 6,983.60
City Crockett	7141	30.80%	\$ 2,150.95
City Grapeland	1451	6.26%	\$ 437.06
City Lovelady	608	2.62%	\$ 183.14
City Latexo	272	1.17%	\$ 81.93
City Kennard	317	1.37%	\$ 95.48
Unincorporated - to County	13396	57.78%	\$ 4,035.04
	<u>23185</u>	<u>100.00%</u>	<u>\$ 6,983.60</u>
Jasper County	35604	100.00%	\$ 8,346.21
City Jasper	8247	23.16%	\$ 1,933.24
City Kirbyville	2085	5.86%	\$ 488.76
City Browndell	219	0.62%	\$ -
Unincorporated- to County	25053	70.37%	\$ 5,924.21
	<u>35604</u>	<u>100.00%</u>	<u>\$ 8,346.21</u>
Nacogdoches County	59203	100.00%	\$ 7,209.21
City Nacogdoches	29914	50.53%	\$ 3,642.66
City Appleby	444	0.75%	\$ -
City Chireno	405	0.68%	\$ -
City Cushing	637	1.08%	\$ 77.57
City Garrison	844	1.43%	\$ 102.77
Unincorporated- to County	26959	45.54%	\$ 3,386.21
	<u>59203</u>	<u>100.00%</u>	<u>\$ 7,209.21</u>

Newton County	15072	100.00%	\$ 7,750.73
City Newton	2459	16.32%	\$ 1,264.53
Unincorporated- to County	12613	83.68%	\$ 6,486.20
	15072	100.00%	\$ 7,750.73
Polk County	41133	100.00%	\$ 7,986.64
City Livingston	5433	13.21%	\$ 1,054.91
City Corrigan	1721	4.18%	\$ 334.16
City Goodrich	243	0.59%	\$ -
City Onalaska	1174	2.85%	\$ 227.95
City Seven Oaks	131	0.32%	\$ -
ACIR estimated	480	1.17%	\$ 93.20
Unincorporated- to County	31951	77.68%	\$ 6,276.43
	41133	100.00%	\$ 7,986.64
Sabine County	10469	100.00%	\$ 7,653.19
City Hemphill	1106	10.56%	\$ 808.52
City Pineland	980	9.36%	\$ 716.41
Unincorporated- to County	8383	80.07%	\$ 6,128.25
	10469	100.00%	\$ 7,653.19
San Augustine County	8946	100.00%	\$ 7,952.81
City San Augustine	2475	27.67%	\$ 2,200.22
City Broaddus	189	2.11%	\$ 168.02
Unincorporated- to County	6282	70.22%	\$ 5,584.57
	8946	100.00%	\$ 7,952.81
San Jacinto County	22246	100.00%	\$ 10,461.11
City Coldspring	691	3.11%	\$ 324.94
City Shepherd	2029	9.12%	\$ 954.13
City Point Blank	559	2.51%	\$ 262.87
Unincorporated- to County	18967	85.26%	\$ 8,919.17
	22246	100.00%	\$ 10,461.11
Shelby County	25224	100.00%	\$ 6,624.86
City Center	5678	22.51%	\$ 1,491.28
City Huxley	298	1.18%	\$ 78.27

City Joaquin	925	3.67%	\$	242.94
City Tenaha	1046	4.15%	\$	274.72
City Timpson	1094	4.34%	\$	287.33
Unincorporated- to County	16183	64.16%	\$	4,250.32
	25224	100.00%	\$	6,624.86

Trinity County 13779 100.00% \$ 7,103.03

City Groveton	1107	8.03%	\$	570.65
City Trinity	2721	19.75%	\$	1,402.67
Unincorporated- to County	9951	72.22%	\$	5,129.71
	13779	100.00%	\$	7,103.03

Tyler County 20871 100.00% \$ 8,591.08

City Woodville	2415	11.57%	\$	994.08
City Chester	265	1.27%	\$	109.08
City Colmesneil	638	3.06%	\$	262.62
Unincorporated- to County	17553	84.10%	\$	7,225.30
	20871	100.00%	\$	8,591.08

DETCOG Local Funds \$ 6,686.25

Allocation within Counties
TDRA Non-Housing
Additional Funding per Conciliation Agreement

	Total Population	% Total	Additional Funding	Original Funding	Total Award
Angelina County	80130	100.00%	\$ 712,786.43	\$ 4,261,057	\$ 4,973,843.43
City Lufkin	32709	40.82%	\$ 290,958.83	\$ 1,739,360	\$ 2,030,318.79
City Diboll	5470	6.83%	\$ 48,657.70	\$ 290,877	\$ 339,534.80
City Burke	315	0.39%	\$ 0.00	\$ (0)	\$ -
City Hudson	3792	4.73%	\$ 33,731.26	\$ 201,646	\$ 235,377.69
City Huntington	2068	2.58%	\$ 18,395.64	\$ 109,970	\$ 128,365.26
City Zavalla	647	0.81%	\$ (0.00)	\$ 0	\$ -
Unincorporated-to County	35129	43.84%	\$ 321,042.99	\$ 1,919,204	\$ 2,240,246.89
	<u>80130</u>	<u>100.00%</u>	<u>\$ 712,786.43</u>	<u>\$ 4,261,057</u>	<u>\$ 4,973,843.43</u>
Houston County	23185	100.00%	\$ 748,399.94	\$ 4,473,956.00	\$ 5,222,355.94
City Crockett	7141	30.80%	\$ 230,507.83	\$ 1,377,982.31	\$ 1,608,490.13
City Grapeland	1451	6.26%	\$ 46,837.54	\$ 279,996.12	\$ 326,833.66
City Lovelady	608	2.62%	\$ 19,625.93	\$ 117,324.36	\$ 136,950.29
City Latexo	272	1.17%	\$ 8,780.02	\$ 75,000.21	\$ 83,780.23
City Kennard	317	1.37%	\$ 10,232.60	\$ 74,999.76	\$ 85,232.36
Unincorporated - to County	13396	57.78%	\$ 432,416.03	\$ 2,548,653.24	\$ 2,981,069.26
	<u>23185</u>	<u>100.00%</u>	<u>\$ 748,399.94</u>	<u>\$ 4,473,956.00</u>	<u>\$ 5,222,355.94</u>
Jasper County	35604	100.00%	\$ 894,424.28	\$ 5,346,894.00	\$ 6,241,318.28
City Jasper	8247	23.16%	\$ 207,176.64	\$ 1,238,507.89	\$ 1,445,684.53
City Kirbyville	2085	5.86%	\$ 52,378.23	\$ 313,118.58	\$ 365,496.82
City Browndell	219	0.62%	\$ (0.00)	\$ -	\$ (0.00)
Unincorporated- to County	25053	70.37%	\$ 634,869.41	\$ 3,795,267.82	\$ 4,430,136.94
	<u>35604</u>	<u>100.00%</u>	<u>\$ 894,424.28</u>	<u>\$ 5,346,894.00</u>	<u>\$ 6,241,318.28</u>
Nacogdoches County	59203	100.00%	\$ 772,577.54	\$ 4,618,491.00	\$ 5,391,068.54
City Nacogdoches	29914	50.53%	\$ 390,366.78	\$ 2,333,623.97	\$ 2,723,990.75
City Appleby	444	0.75%	\$ (0.00)	\$ -	\$ (0.00)
City Chireno	405	0.68%	\$ 0.00	\$ -	\$ 0.00
City Cushing	637	1.08%	\$ 8,312.62	\$ 75,000.00	\$ 83,312.62
City Garrison	844	1.43%	\$ 11,013.89	\$ 75,000.00	\$ 86,013.89
Unincorporated- to County	26959	45.54%	\$ 362,884.25	\$ 2,134,866.18	\$ 2,497,751.28
	<u>59203</u>	<u>100.00%</u>	<u>\$ 772,577.54</u>	<u>\$ 4,618,491.00</u>	<u>\$ 5,391,068.54</u>

Newton County	15072	100.00%	\$	830,609.59	\$ 4,965,408.00	\$ 5,796,017.59
City Newton	2459	16.32%	\$	135,514.13	\$ 810,107.37	\$ 945,621.50
Unincorporated- to County	12613	83.68%	\$	695,095.46	\$ 4,155,300.63	\$ 4,850,396.09
	15072	100.00%	\$	830,609.59	\$ 4,965,408.00	\$ 5,796,017.59
Polk County	41133	100.00%	\$	855,891.38	\$ 5,116,543.00	\$ 5,972,434.38
City Livingston	5433	13.21%	\$	113,049.32	\$ 675,812.08	\$ 788,861.40
City Corrigan	1721	4.18%	\$	35,810.40	\$ 214,075.57	\$ 249,885.97
City Goodrich	243	0.59%	\$	(0.00)	\$ 0.00	\$ 0.00
City Onalaska	1174	2.85%	\$	24,428.48	\$ 146,034.12	\$ 170,462.60
City Seven Oaks	131	0.32%	\$	0.00	\$ (0.00)	\$ 0.00
ACIR estimated	480	1.17%	\$	9,987.79	\$ 75,000.31	\$ 84,988.10
Unincorporated- to County	31951	77.68%	\$	672,615.39	\$ 4,005,620.92	\$ 4,678,236.31
	41133	100.00%	\$	855,891.38	\$ 5,116,543.00	\$ 5,972,434.38
Sabine County	10469	100.00%	\$	820,156.96	\$ 4,902,922.00	\$ 5,723,078.96
City Hemphill	1106	10.56%	\$	86,645.68	\$ 517,970.36	\$ 604,616.04
City Pineland	980	9.36%	\$	76,774.65	\$ 458,961.08	\$ 535,735.73
Unincorporated- to County	8383	80.07%	\$	656,736.63	\$ 3,925,990.56	\$ 4,582,727.19
	10469	100.00%	\$	820,156.96	\$ 4,902,922.00	\$ 5,723,078.96
San Augustine County	8946	100.00%	\$	852,265.20	\$ 5,094,865.00	\$ 5,947,130.20
City San Augustine	2475	27.67%	\$	235,787.66	\$ 1,409,545.15	\$ 1,645,332.80
City Broadus	189	2.11%	\$	18,005.60	\$ 107,637.99	\$ 125,643.60
Unincorporated- to County	6282	70.22%	\$	598,471.94	\$ 3,577,681.86	\$ 4,176,153.80
	8946	100.00%	\$	852,265.20	\$ 5,094,865.00	\$ 5,947,130.20
San Jacinto County	22246	100.00%	\$	1,121,068.60	\$ 6,701,780.00	\$ 7,822,848.60
City Coldspring	691	3.11%	\$	34,822.37	\$ 208,169.11	\$ 242,991.48
City Shepherd	2029	9.12%	\$	102,249.76	\$ 611,251.98	\$ 713,501.74
City Point Blank	559	2.51%	\$	28,170.34	\$ 168,403.08	\$ 196,573.42
Unincorporated- to County	18967	85.26%	\$	955,826.13	\$ 5,713,955.82	\$ 6,669,781.96
	22246	100.00%	\$	1,121,068.60	\$ 6,701,780.00	\$ 7,822,848.60
Shelby County	25224	100.00%	\$	709,954.98	\$ 4,244,131.04	\$ 4,954,086.02
City Center	5678	22.51%	\$	159,813.05	\$ 955,366.94	\$ 1,115,180.00
City Huxley	298	1.18%	\$	8,387.51	\$ 74,999.78	\$ 83,387.29

City Joaquin	925	3.67%	\$	26,035.06	\$	155,637.33	\$	181,672.39
City Tenaha	1046	4.15%	\$	29,440.73	\$	175,997.50	\$	205,438.23
City Timpson	1094	4.34%	\$	30,791.74	\$	184,073.87	\$	214,865.61
Unincorporated- to County	16183	64.16%	\$	455,486.90	\$	2,698,055.61	\$	3,153,542.51
	25224	100.00%	\$	709,954.98	\$	4,244,131.04	\$	4,954,086.02
Trinity County	13779	100.00%	\$	761,198.70	\$	4,550,467.42	\$	5,311,666.12
City Groveton	1107	8.03%	\$	61,154.44	\$	365,582.91	\$	426,737.35
City Trinity	2721	19.75%	\$	150,317.27	\$	898,600.82	\$	1,048,918.09
Unincorporated- to County	9951	72.22%	\$	549,726.99	\$	3,286,283.69	\$	3,836,010.68
	13779	100.00%	\$	761,198.70	\$	4,550,467.42	\$	5,311,666.12
Tyler County	20871	100.00%	\$	920,666.39	\$	5,503,770.00	\$	6,424,436.39
City Woodville	2415	11.57%	\$	106,531.04	\$	636,845.60	\$	743,376.64
City Chester	265	1.27%	\$	11,689.74	\$	74,999.61	\$	86,689.35
City Colmesneil	638	3.06%	\$	28,143.60	\$	168,243.27	\$	196,386.87
Unincorporated- to County	17553	84.10%	\$	774,302.00	\$	4,623,681.52	\$	5,397,983.53
	20871	100.00%	\$	920,666.39	\$	5,503,770.00	\$	6,424,436.39
Total Allocation			\$	10,000,000	\$	59,780,284	\$	69,780,284

COG
Population / LMI
Comparison

COG	County	Median Household Income	Total County Population	Persons Below Poverty	% Persons Below Poverty	Low to Moderate Income People	"Moderate" Household Income	Percent LMI People
HGAC								
	Austin	\$38,615	23,345	2,814	12.1%	9,433	\$30,892	40.4%
	Brazoria	\$48,632	230,436	23,465	10.2%	94,283	\$38,906	40.9%
	Chambers	\$47,964	25,719	2,833	11.0%	9,652	\$38,371	37.5%
	Colorado	\$32,425	19,543	3,171	16.2%	8,349	\$25,940	42.7%
	Ft. Bend	\$63,831	349,010	24,953	7.1%	94,005	\$51,065	26.9%
	Galveston	\$42,419	245,887	32,510	13.2%	103,733	\$33,935	42.2%
	Harris	\$42,598	3,360,536	503,234	15.0%	1,521,319	\$34,078	45.3%
	Liberty	\$38,361	64,878	9,296	14.3%	31,550	\$30,689	48.6%
	Matagorda	\$32,174	37,367	6,913	18.5%	16,079	\$25,739	43.0%
	Montgomery	\$50,864	291,519	27,376	9.4%	104,104	\$40,691	35.7%
	Walker	\$31,468	44,904	8,253	18.4%	19,972	\$25,174	44.5%
	Waller	\$38,136	29,487	4,718	16.0%	14,100	\$30,509	47.8%
	Wharton	\$32,208	40,519	6,703	16.5%	17,351	\$25,766	42.8%
SETRPC								
	Hardin	\$37,612	47,518	5,314	11.2%	18,596	\$30,090	39.1%
	Jefferson	\$34,706	236,846	41,142	17.4%	102,478	\$27,765	43.3%
	Orange	\$37,586	83,755	11,518	13.8%	33,234	\$30,069	39.7%
LRGUDC								
	Cameron	\$26,155	330,649	109,288	33.1%	184,425	\$20,924	55.8%
	Hidalgo	\$24,863	562,756	201,865	35.9%	335,240	\$19,890	59.6%
	Willacy	\$22,114	18,969	6,300	33.2%	11,530	\$17,691	60.8%
DETCOG								
	Angelina	\$33,806	77,567	12,241	15.8%	31,419	\$27,045	40.5%
	Houston	\$28,119	20,135	4,219	21.0%	8,783	\$22,495	43.6%
	Jasper	\$30,902	34,540	6,237	18.1%	13,901	\$24,722	40.2%
	Nacogdoches	\$28,301	54,637	12,743	23.3%	24,425	\$22,641	44.7%
	Newton	\$28,500	14,461	2,760	19.1%	6,485	\$22,800	44.8%
	Polk	\$30,495	37,658	6,540	17.4%	15,159	\$24,396	40.3%
	Sabine	\$27,198	10,313	1,643	15.9%	4,546	\$21,758	44.1%
	San Augustine	\$27,025	8,688	1,840	21.2%	3,838	\$21,620	44.2%
	San Jacinto	\$32,220	22,049	4,150	18.8%	12,212	\$25,776	55.4%
	Shelby	\$29,112	24,747	4,800	19.4%	10,777	\$23,290	43.5%
	Trinity	\$27,070	13,582	2,394	17.6%	6,093	\$21,656	44.9%
	Tyler	\$29,808	19,278	3,044	15.8%	8,115	\$23,846	42.1%

RESOLUTION

Requesting Amended or Revision of Inequity in Rules Defining Low- and Moderate-Income in DETCOG Counties

WHEREAS, the Federal Government to date has allocated more than 3 billion dollars to aid in disaster recovery efforts in Texas related to Hurricanes Ike and Dolly under Public Law 110-329, the Consolidated Security, Disaster Assistance, and Continuing Appropriations Act; and

WHEREAS, the State of Texas, working hand in hand with local Counties, Cities and Councils of Government, has developed a Plan For Disaster Recovery, which allocates these funds in a fair and equitable manner to benefit victims throughout the affected areas; and

WHEREAS, the Deep East Texas Council of Governments (DETCOG) and its member Counties, Cities, Tribal, and other units of local government have played an active part in this process to ensure that the disaster recovery funding is utilized in a fair and efficient manner; and

WHEREAS, under a waiver granted by the U.S. Department of Housing and Urban Development (HUD), at least 50 percent of the aggregate of funds under this program must be used for support of activities producing benefit to low- and moderate-income (LMI) persons; and

WHEREAS, DETCOG and its member governments support the utilization of these funds in accordance with the LMI national objective; however, there is an inequity in the rules defining LMI which has the unintended effect of penalizing some of the Counties with the lowest median incomes; and

WHEREAS, under the current rules, projects in several Deep East Texas Counties which would benefit persons living in households with an average household income of \$27,200 per year would not qualify under the LMI rules because they would be compared to the average household income in the County, which is even lower than that. At the same time, persons living in other Counties which are located within the Houston Metropolitan Statistical Area (MSA) would qualify under the same rules even if they had a much higher household income, because their income would be compared to the average income of the MSA; and

WHEREAS, the statistics presented in Attachment "A" to this Resolution underscore the fact that all 12 of the Deep East Texas Counties are in fact low-income Counties and should be recognized as such by HUD for the purposes of this program;

NOW THEREFORE, BE IT RESOLVED, that the Deep East Texas Council of Governments Board of Directors urges the U.S. Department of Housing and Urban Development to recognize the fact that all 12 of the Deep East Texas Counties are in fact low-income Counties, and to take one or both of the following actions to correct this inequity:

- (1) grant whatever waiver or waivers may be required to correct this inequity so that the citizens of Deep East Texas are treated fairly; and/or
- (2) amend the LMI rules to allow for household income to be compared to the average state income, the average income for all counties within the designated disaster area, or the average income of the nearest MSA within the designated disaster area.

Passed and Approved this 28th day of January, 2010.

Deep East Texas Council of Governments


Donnie Henson, DETCOG Board President

ATTEST:


Charles Watson, DETCOG Board Secretary



ATTACHMENT "A"

2000 Census Bureau Data – Counties in DETCOG

Jurisdiction	Median Household Income	Persons Below Poverty
United States	\$41,994	12.4 %
State of Texas	\$39,927	15.4 %
Angelina County	\$33,806	15.8 %
Houston County	\$28,119	21.0 %
Jasper County	\$30,902	15.8 %
Nacogdoches County	\$28,301	23.3 %
Newton County	\$28,500	19.1 %
Polk County	\$30,495	17.4 %
Sabine County	\$27,198	15.9 %
San Augustine County	\$27,025	21.2 %
San Jacinto County	\$32,220	18.8 %
Shelby County	\$29,112	19.4 %
Trinity County	\$27,070	17.6 %
Tyler County	\$29,808	15.8 %

ATTACHMENT "B"

2007 Census Bureau Estimates – Counties in DETCOG

Jurisdiction	Median Household Income	Persons Below Poverty
United States	\$50,233	12.5 %
State of Texas	\$47,563	16.3 %
Angelina County	\$37,953	19.3 %
Houston County	\$33,497	24.0 %
Jasper County	\$36,608	20.8 %
Nacogdoches County	\$32,774	21.1 %
Newton County	\$34,162	20.4 %
Polk County	\$37,152	17.5 %
Sabine County	\$34,555	16.1 %
San Augustine County	\$30,458	21.8 %
Shelby County	\$33,420	18.8 %
San Jacinto County	\$39,463	17.2 %
Trinity County	\$33,064	18.0 %
Tyler County	\$36,275	18.8 %

RESOLUTION

State of Texas §

County of Tyler §

WHEREAS, the Tyler County Commissioner's Court finds it in the best interest of the citizens of Tyler County, that the "Car Computers" Project be operated for 2010 – 2011; and **WHEREAS**, the Tyler County Commissioner's Court agrees that in the event of loss or misuse of the Criminal Justice Division funds, the Tyler County Commissioner's Court assures that the funds will be returned to the Criminal Justice Division in full. **WHEREAS**, the Tyler County Commissioner's Court designates the County Judge, as the grantee's authorized official. The authorized official is given the power to apply for, accept, reject, alter or terminate the grant on behalf of the applicant agency.

NOW THEREFORE, BE IT RESOLVED that the Tyler County Commissioner's Court approves submission of the grant application for the "Car Computers" Project to the Office of the Governor, Criminal Justice Division.

Passed and Approved by the Tyler County Commissioner's Court this 14th day of May, 2010.


Jacques L. Blanchette, County Judge


Martin Nash, Commissioner, Precinct 1


Rusty Hughes, Commissioner, Precinct 2


Mike Marshall, Commissioner, Precinct 3


Jack Walston, Commissioner, Precinct 4

Grant Number: 2388401



TYLER COUNTY COMMISSIONERS COURT

County Courthouse, Room 101 / Woodville, Texas

Friday
May 14, 2010
8:30 AM

MARTIN NASH
Commissioner, Pct. 1

RUSTY HUGHES
Commissioner, Pct. 2

JACQUES L. BLANCHETTE
County Judge

MIKE MARSHALL
Commissioner, Pct. 3

JACK WALSTON
Commissioner, Pct. 4

NOTICE Is hereby given that a *Special Meeting* of the Tyler County Commissioners Court will be held on the date stated above, at which time the following subjects will be discussed;

Agenda

"the wisdom to know what's right and the courage to do it"

➤ CALL TO ORDER

- Establish Quorum
- Acknowledge Guests
- Invocation - c/o J. Blanchette
- Pledge to the Texas Flag: c/o J. Blanchette

"Honor the Texas Flag: I pledge allegiance to thee, Texas, one state under God, one and indivisible."

Jeff Marshall New Warder - over 600 employees

I. CONSIDER/APPROVE:

- M/H* A. ITEM 1 Commissioners Court minutes from previous meeting(s) - D. Gregory *3 sets*
- M/H* B. The paying of Tyler County bills - Joyce Moore, Auditor
- W/H* C. Negotiate bid ID# 03082010-01 Scrap metal at the Tyler County Collection Center - J. Moore
- W/H* D. ITEM 2 Agreement between Riverbend Midstream Partners, LLC, owners of Pipeline and Tyler County Precinct #4, to cross County Road 4445 (Sheffield Ferry Rd) - J. Walston
- W/H* E. Retirement funding for "permanent" part-time Tyler County employees with TCDRS, retroactive to January 1, 2006 as required by HB633 - Sharon Fuller, Treasurer
- N/W* F. ITEM 3 Estimated legal fee allocation for Tyler County to DETCOG for the explicit purpose of obtaining waivers of LMI eligibility requirements for the use of Hurricane Disaster Recovery CDBG funds - Walter Diggles, Ex. Dir. DETCOG
low-moderate income
will get direction from Auditor as to proper fund to
- Next - they saying that ~~people~~ low income people in +

m/w
G. ITEM 4 Resolution for Grant Number 2388401 with the Criminal Justice Division - David Hennigan, Sheriff
- Computers for CTRs - → ~~Deton~~
- Added appra for Assist Gib Lewis provided to ShO.

v/h
H. Canvass results of the Local Option Election in JP Pct. # 2 - D. Gregory
Note: ...the canvassing authority must make a note on the canvass that a recount has been requested.

II. PRESENTATIONS:

- A. Woodville High School Horticulture Class - J. Blanchette
- B. Introduction of Cody Ginsel, Senior Warden, and Steve Miller, Warden, Gib Lewis Unit - J. Blanchette

m/w
ADJOURN 9:11

I do hereby certify that the above Notice of Meeting of the Tyler County Commissioners Court is a true and correct copy of said Notice and that I posted a true and correct copy of said Notice at the Tyler County Courthouse in a place readily accessible to the general public at all times and that said Notice remained so posted continuously for at least 72 hours preceding the scheduled time of said meeting, as is required by Section 551.002 & 551.041.

Executed on _____ 2010 Time _____

Donece Gregory, County Clerk/Ex Officio Member of Commissioners Court

By: _____ (Deputy)

Confirmed 5/14/10

Jacques Stanchetta
 Mike Marshall
 Ruth Hughes

May 8 2010

Local Option Election,
 Pct. #2

Prop. 1- legal sale of beer & wine, off- premise consumption	Prop. 2- legal sale of mixed drinks in restaurants
--	--

Polling Places	Registd Voters	PCT	#Voted	FOR	AGAINST	FOR	AGAINST
Masonic Lodge, Woodville	794	2	✓ 65	✓ 54	✓ 10	✓ 54	✓ 10
EARLY VOTE- 2		2	✓ 85	✓ 42	✓ 41	✓ 42	✓ 43
Chester Lions Club	518	7	✓ 111	✓ 29	✓ 80	✓ 30	✓ 81
EARLY VOTE- 7		7	✓ 51	✓ 22	✓ 28	✓ 20	✓ 30
Bethany Baptist Church	146 146	8	✓ 29 28	✓ 10	✓ 18 +1	✓ 10	✓ 18 +1
EARLY VOTE- 8		8	✓ 24	✓ 7	✓ 17	✓ 7	✓ 17
Fire Station, Woodville	1567	18	✓ 169	✓ 81	✓ 87	✓ 85	✓ 83
EARLY VOTE- 18		18	✓ 311	✓ 172	✓ 138	✓ 164	✓ 143
TOTAL	3025		844	417	419	412	425

Provisional
Vote

845
42085
426 100

UNOFFICIAL RESULTS